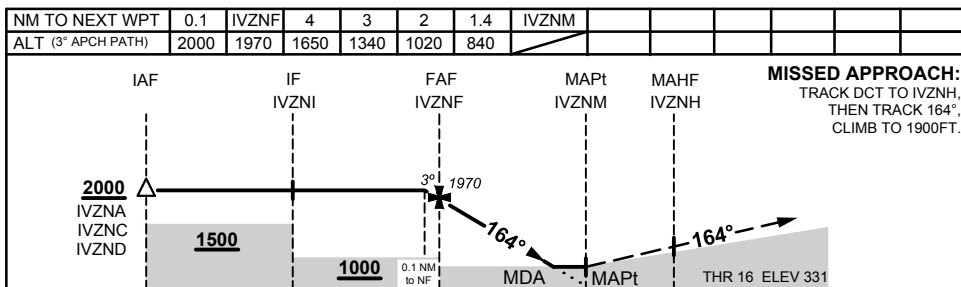
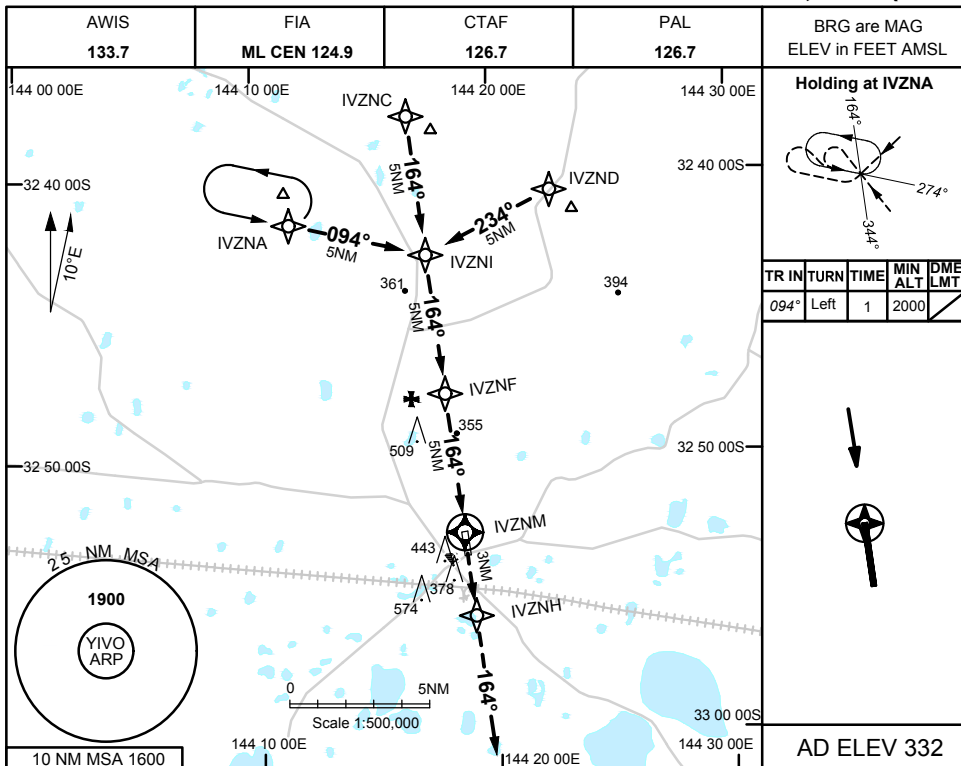


5 NOV 2020

USE QNH

RNAV_(GNSS)RWY 16
IVANHOE, NSW (YIVO)



CATEGORY	A	B	C	D
LNAV	840 (508 - 2.9)			NOT APPLICABLE
CIRCLING	1010 (678 - 2.4)		1100 (768 - 4.0)	
ALTERNATE	(1178 - 4.4)		(1268 - 6.0)	

NOTES
 1. MAX IAS:
 INITIAL : 210KTS

Changes: PAL FREQ

IVOGN01-165

