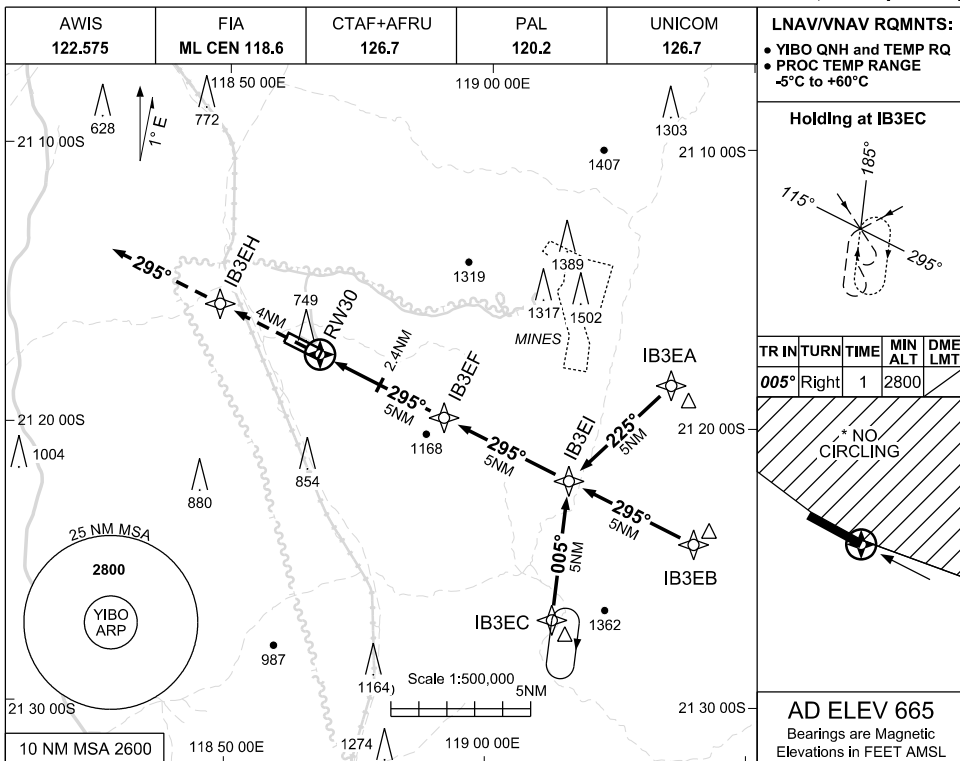


USE QNH

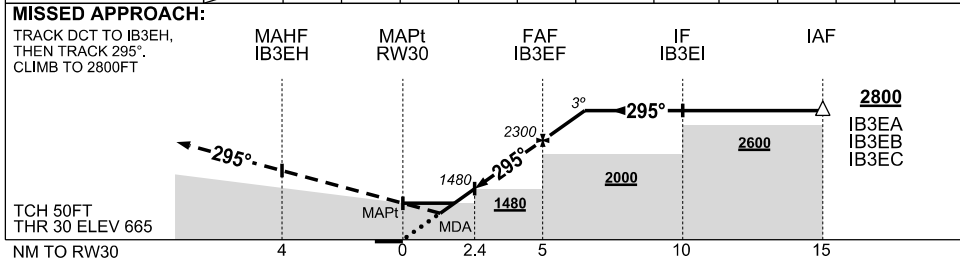
RNAV (GNSS) RWY 30

IRON BRIDGE MINE, WA (YIBO)

17 JUN 2021



NM TO NEXT WPT	RW30	1.0	1.7	2	3	4	IB3EF	1	1.5			
ALT (3° APCH PATH)		1020	1250	1350	1670	1990	2300	2630	2800			



NOTES

1. MAX IAS:
INITIAL : 210KT
- *2. NO CIRCLING
N OF RWY 12/30
3. CAUTION:
YWGA PROCS
ADJACENT TO NW

CATEGORY	A	B	C	D
LNAV/VNAV		1020 (355-2.0)		
LNAV		1250 (585-3.3)		
* CIRCLING	1370 (705-2.4)		1660(995-4.0)	1790(1125-5.0)
ALTERNATE	(1205-4.4)		(1495-6.0)	(1625-7.0)

Changes: FROM SUP H35/21

IBOGN02-167

