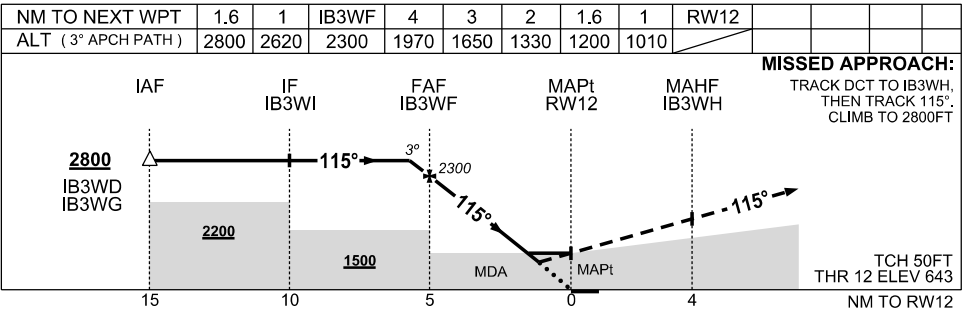
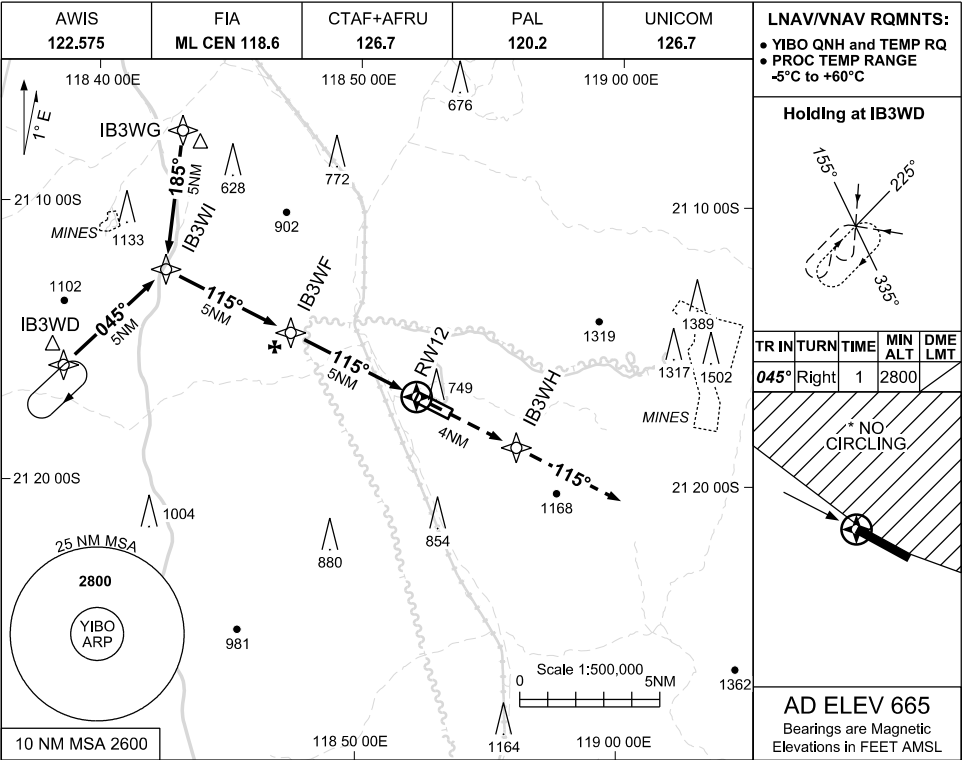


17 JUN 2021

USE QNH

RNAV (GNSS) RWY 12

IRON BRIDGE MINE, WA (YIBO)



NOTES

1. MAX IAS:
INITIAL : 210KT
- *2. NO CIRCLING
N OF RWY 12/30
3. CAUTION:
YWGA PROCS
ADJACENT TO NW

CATEGORY	A	B	C	D
LNAV/VNAV		1010 (367-2.1)		
LNAV		1200 (557-3.2)		
* CIRCLING	1370 (705-2.4)		1660(995-4.0)	1790(1125-5.0)
ALTERNATE	(1205-4.4)		(1495-6.0)	(1625-7.0)

Changes: FROM SUP H35/21

IBOGN01-167