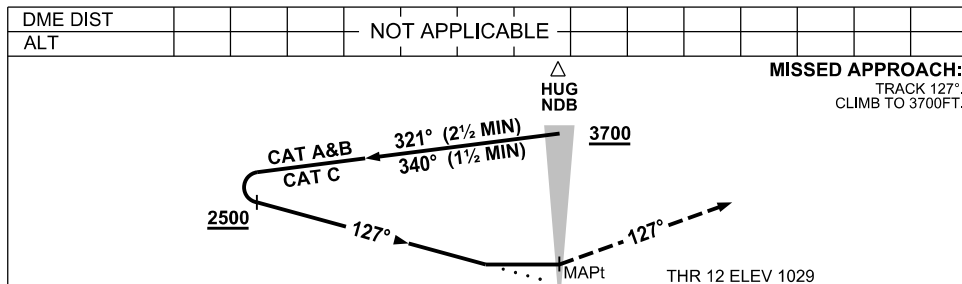
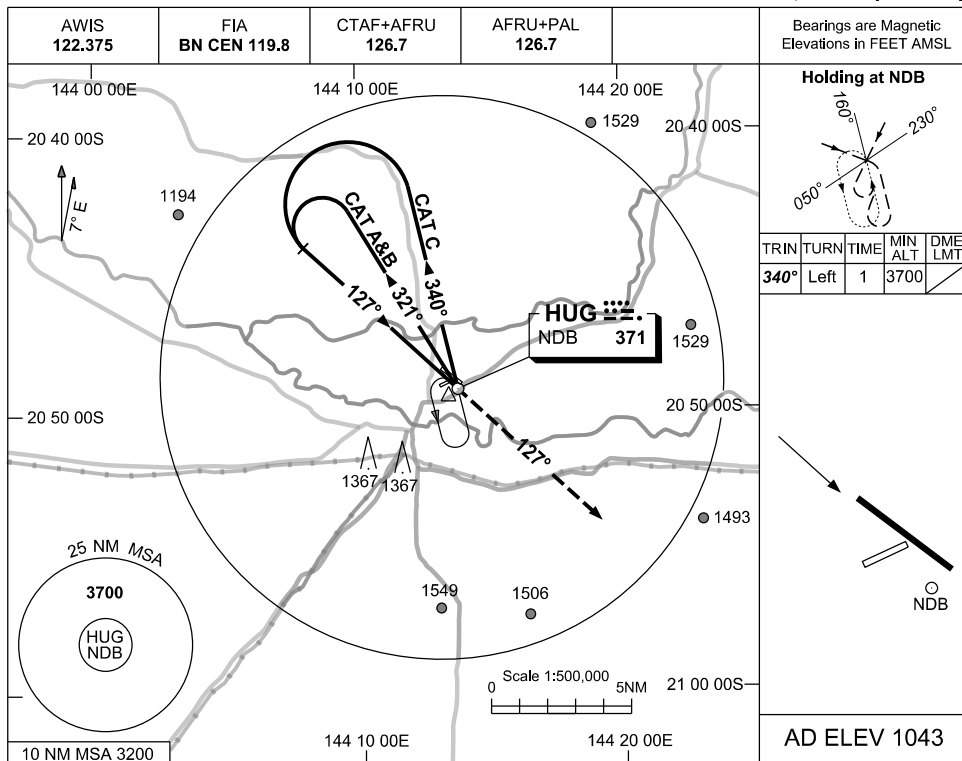


USE QNH

NDB RWY 12

HUGHENDEN, QLD (YHUG)

15 AUG 2019



NOTES

CATEGORY	A	B	C	D
S-I NDB	1760 (731-4.1)			NOT APPLICABLE
CIRCLING	1830 (787-2.4)	1990 (947-4.0)		
ALTERNATE	(1287-4.4)		(1447-6.0)	

1. MAX IAS:
INITIAL :
CAT A&B 140KT.
CAT C 210KT.

Changes: CAT C TRK, COORD FMT



HUGNB01-160