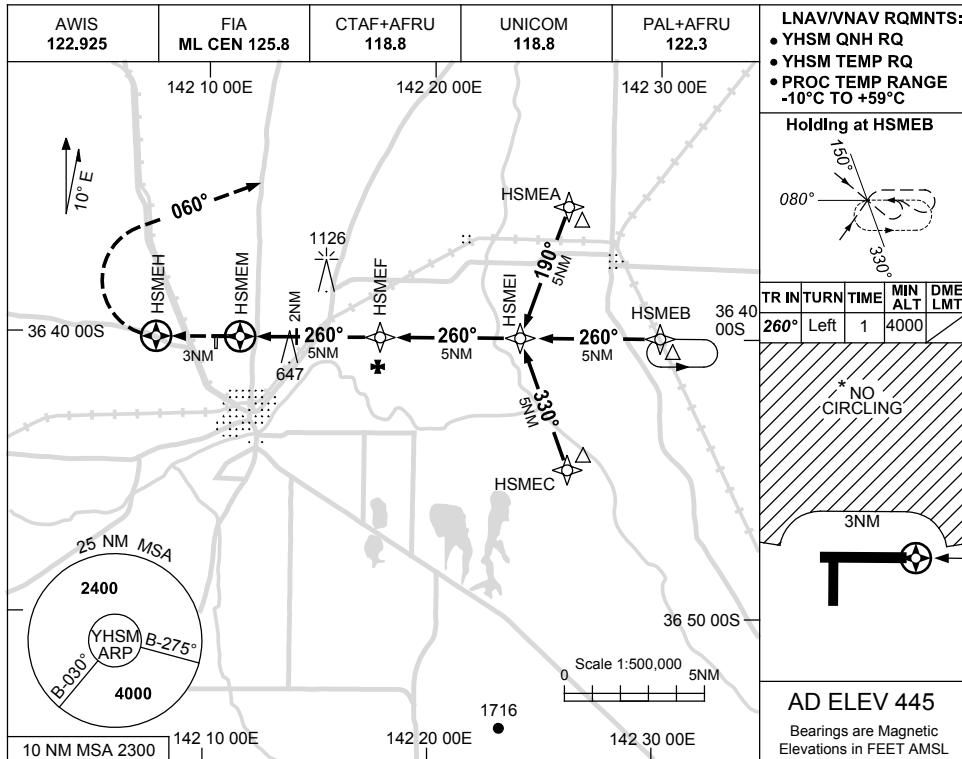


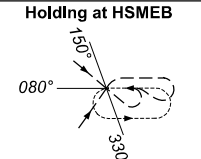
USE QNH

RNAV<sub>(GNSS)</sub> RWY 26  
**HORSHAM, VIC (YHSM)**

27 FEB 2020

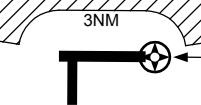


- LNAV/VNAV RQMENTS:**
- YHSM QNH RQ
  - YHSM TEMP RQ
  - PROC TEMP RANGE -10°C TO +59°C



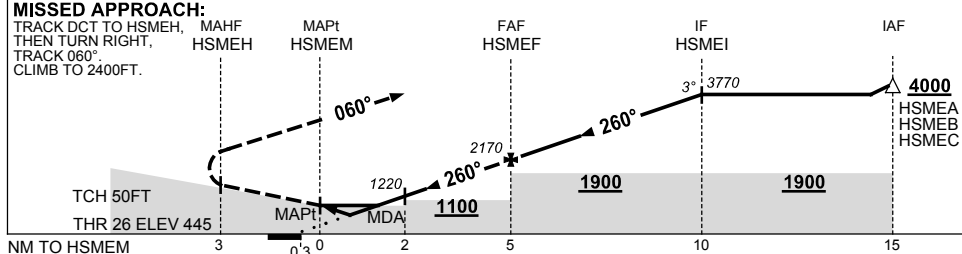
TR	IN	TURN	TIME	MIN ALT	DME LMT
260°	Left	1	4000		

\* NO CIRCLING



**AD ELEV 445**  
 Bearings are Magnetic  
 Elevations in FEET AMSL

NM TO NEXT WPT	HSMEM	0.5	1.1	2	3	4	HSMEF	1	2	3	4	HSMEI
ALT (3° APCH PATH)		750	940	1220	1540	1850	2170	2490	2810	3130	3450	3770



**NOTES**

CATEGORY	A	B	C	D
LNAV/VNAV		750 (305-1.7)		NOT APPLICABLE
LNAV		940 (495-2.8)		
CIRCLING *	1120 (675-2.4)		1160 (715-4.0)	
ALTERNATE	(1175-4.4)		(1215-6.0)	

1. MAX IAS: INITIAL : 210KT.
- \* 2. NO CIRCLING NTH OF RWYS 08/26 BEYOND 3NM.

Changes: 10NM MSA.

HSMGN02-162