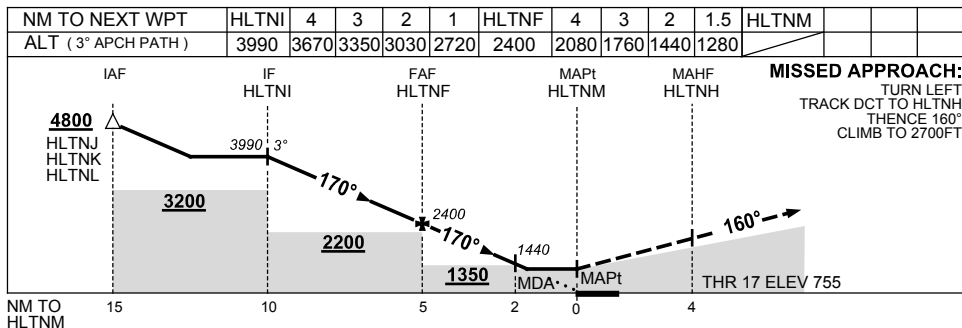
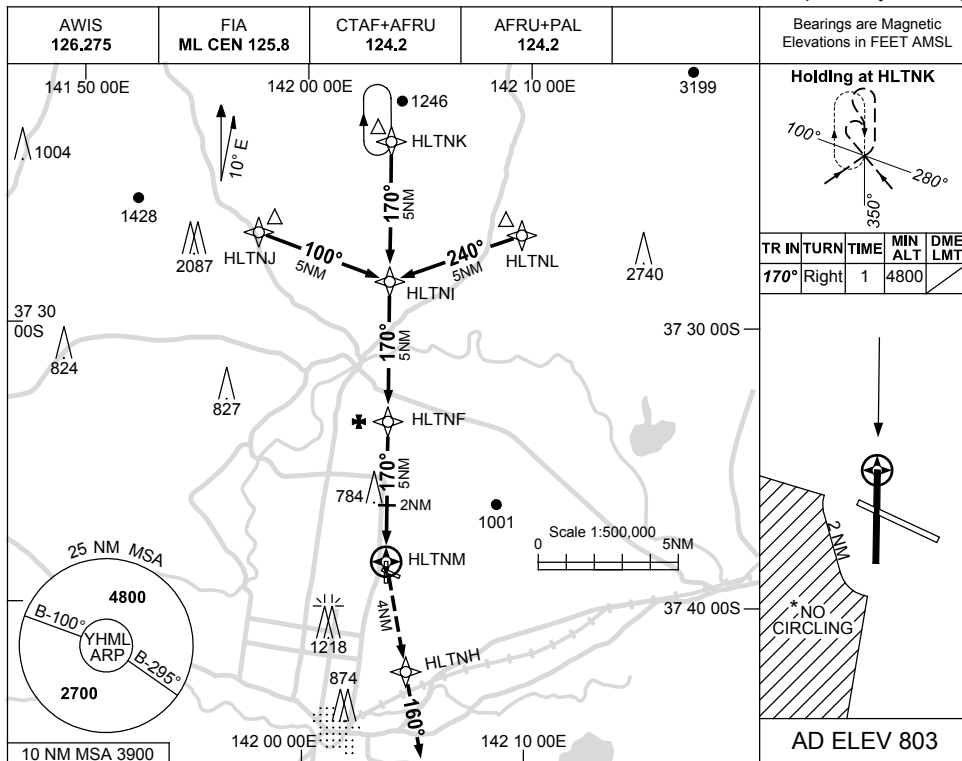


USE QNH

RNAV-Z (GNSS) RWY 17  
HAMILTON, VIC (YHML)

25 MAR 2021



**NOTES**

| CATEGORY   | A                     | B | C                     | D              |
|------------|-----------------------|---|-----------------------|----------------|
| LNAV       | <b>1280 (525-3.0)</b> |   |                       | NOT APPLICABLE |
| CIRCLING * | <b>1450 (647-2.4)</b> |   | <b>1550 (747-4.0)</b> |                |
| ALTERNATE  | <b>(1097-4.4)</b>     |   | <b>(1237-6.0)</b>     |                |

1. MAX IAS:  
INITIAL : 210KT.
- \*2. NO CIRCLING IN  
SECTOR STH OF RWY  
10/28 AND WEST OF  
RWY 17/35 BEYOND  
2NM.

Changes: PROFILE DIAGRAM, OWNERSHIP CHANGE TO AIRSERVICES, COORD FORMAT. Editorial.

HMLGN01-166