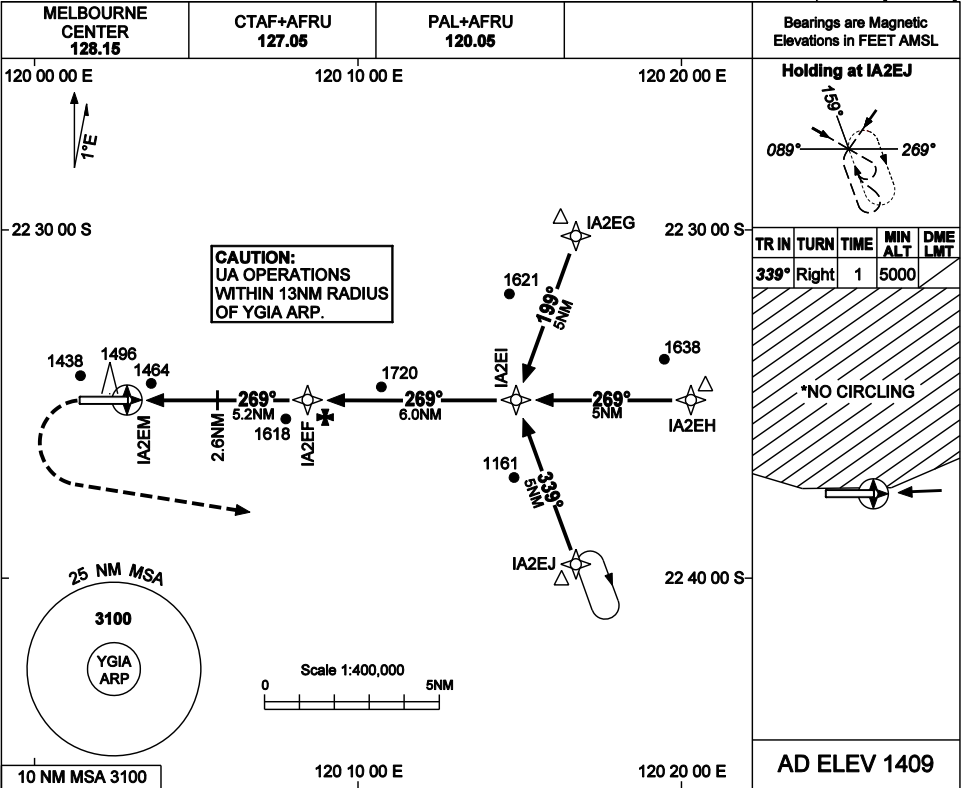


USE QNH

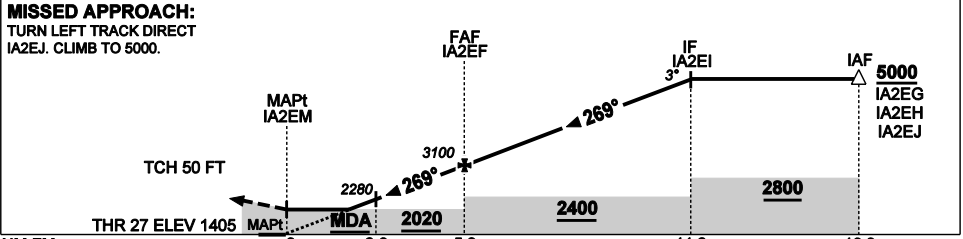
RNAV<sub>(GNSS)</sub> RWY 27

GINBATA, WA (YGIA)

9 SEP 2021



NM TO NEXT WPT	IA2EM	1.1	2	3	4	IA2EF	1	2	3	4	5	IA2EI
ALT (3° APCH PATH)		1810	2090	2410	2730	3100	3390	3690	4010	4330	4650	5000



NM FM MAPt	0	2.6	5.2	11.2	16.2
MAPt	2280	2020	3100	5000	5000

CATEGORY	A	B	C	D
LNAV	1910 (505-2.8)			
CIRCLING*	1990 (581-2.8)	2240 (831-4.4)	2340 (931-5.7)	
ALTERNATE	(1081-4.8)	(1331-6.4)	(1431-7.7)	

**NOTES**  
 1. MAX IAS:  
 - INITIAL: 210 KIAS  
 - MAP TURN: 210 KIAS  
 - HOLDING: 210 KIAS.  
 \*2. NO CIRCLING NORTH OF RWY 09/27.

Changes: S-I GNSS to LNAV.

GIAGN02-168

