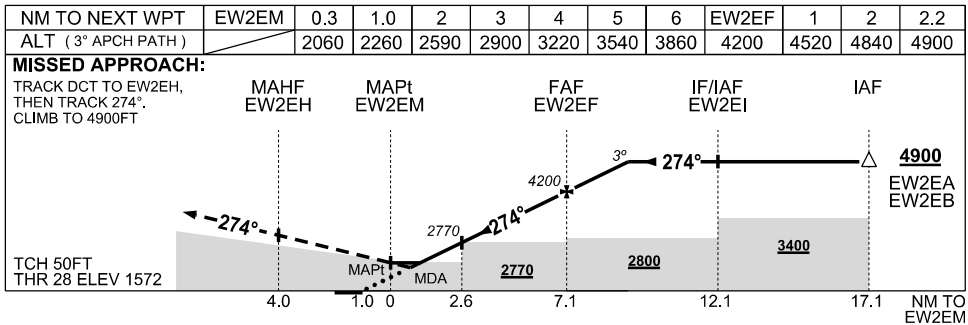
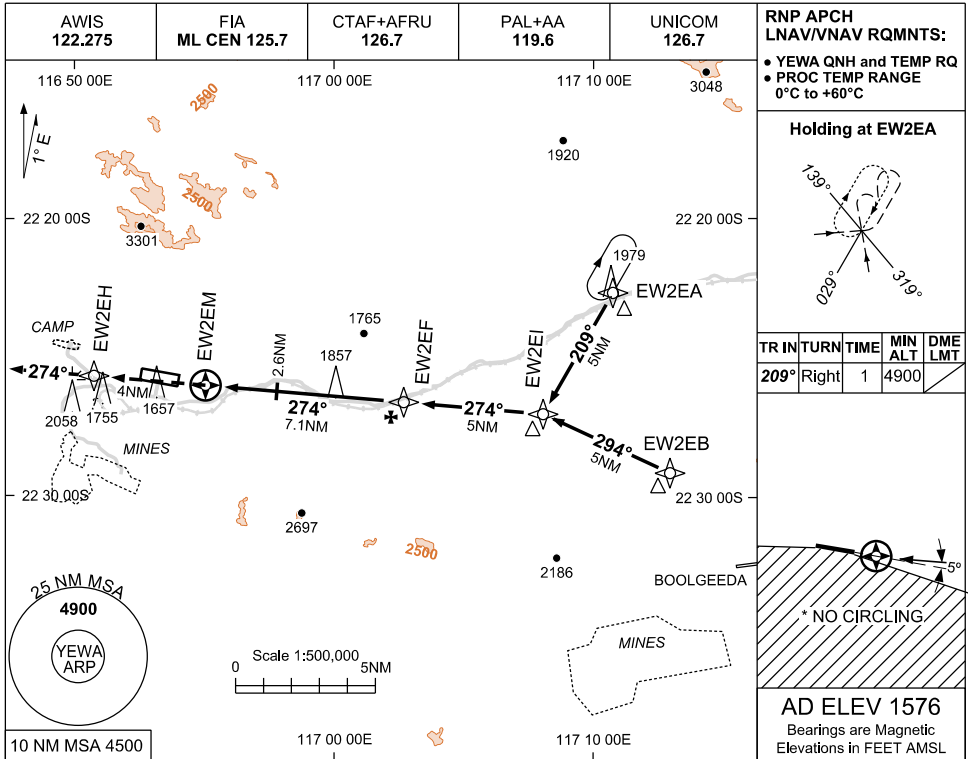


USE QNH

RNP RWY 28  
ELIWANA, WA (YEWA)

30 NOV 2023



**NOTES**

1. MAX IAS : INITIAL: 210KT
2. NO CIRCLING S OF RWY 10/28
3. COLOUR: SEE SPEC NOTICES
4. CAUTION: YBGD PROC ADJACENT TO S

CATEGORY	A	B	C	D
LNAV/VNAV	2060 (488-2.8)			
LNAV	2260 (684-3.9)			
*CIRCLING	2440 (864-2.4)	2680(1104-4.0)		NOT AUTHORISED
ALTERNATE	(1364-4.4)		(1604-6.0)	
			NOT APPLICABLE	

Changes: CHART TITLE, WPT IDENT, EDITORIAL.

EWAGN02-177