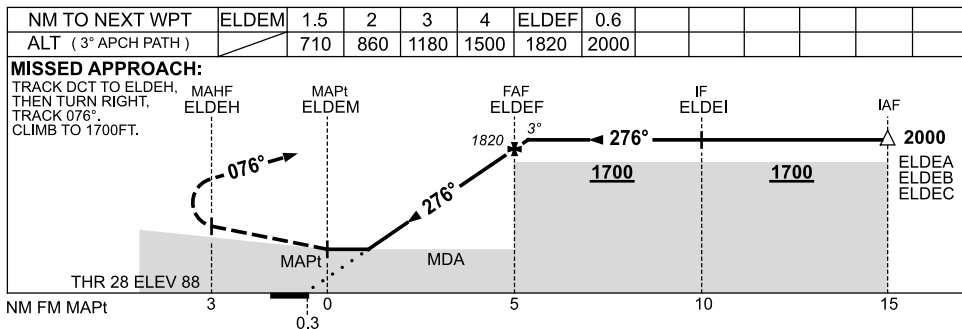
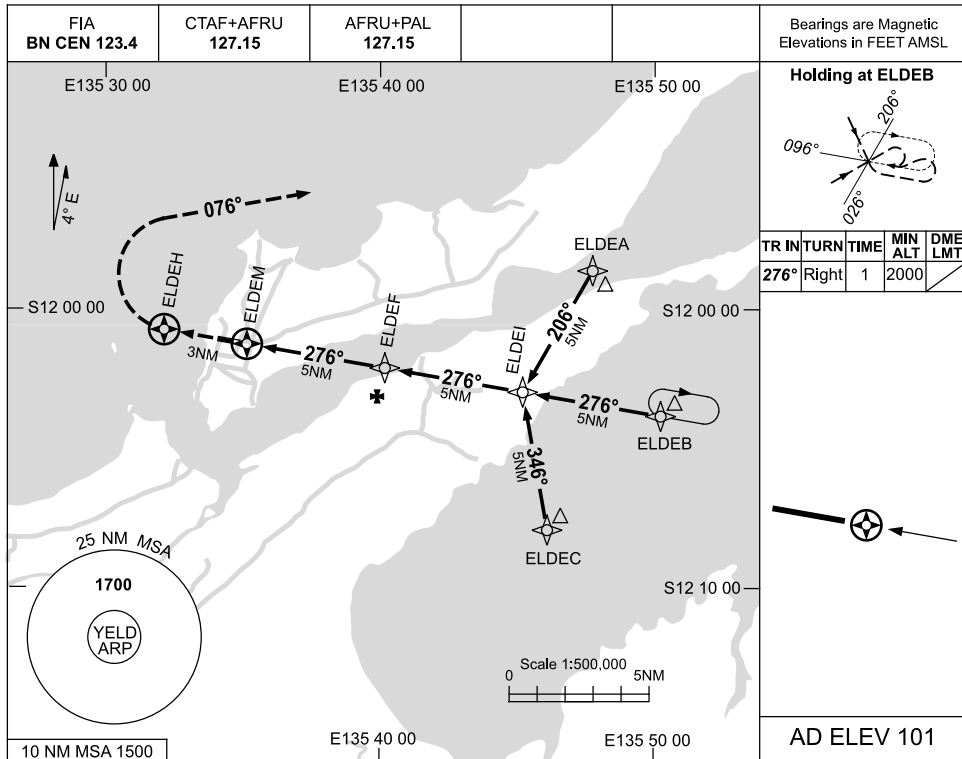


USE QNH

RNAV-Z (GNSS) RWY 28
ELCHO ISLAND, NT (YELD)

3 MAR 2016



NOTES

CATEGORY	A	B	C	D
S-I GNSS	710 (609-3.4)			NOT APPLICABLE
CIRCLING	710 (609-2.4)		800 (699-4.0)	
ALTERNATE	(1109-4.4)		(1199-6.0)	

1. MAX IAS:
INITIAL : 210KT.

Changes: PROC ALT, AFRU.

ELDGN02-146