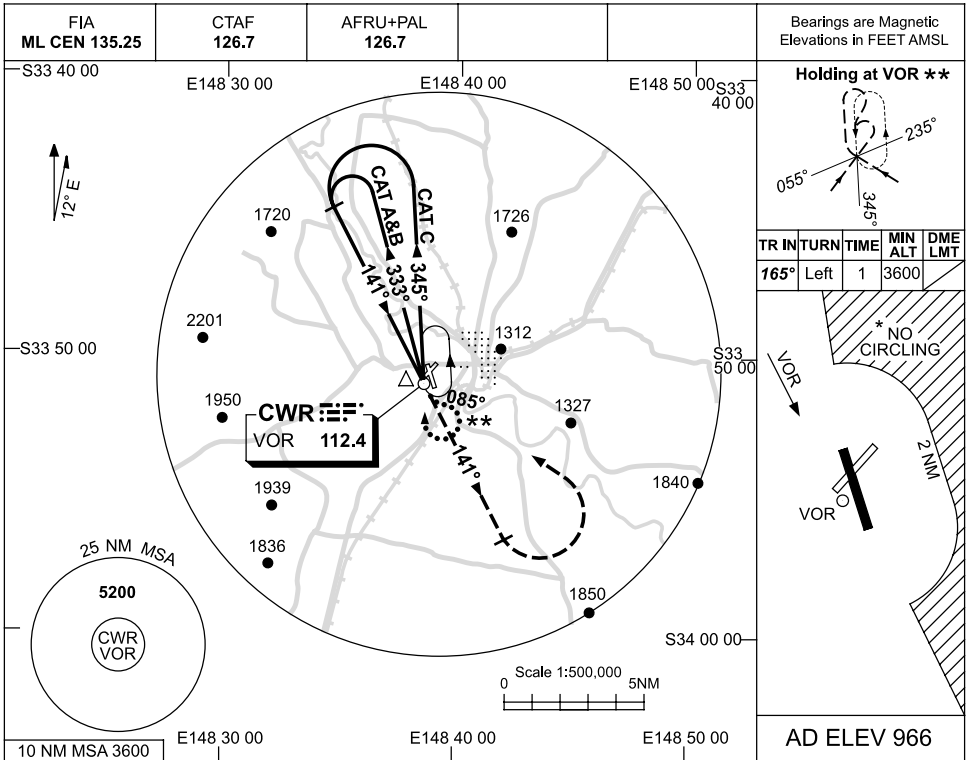


USE QNH

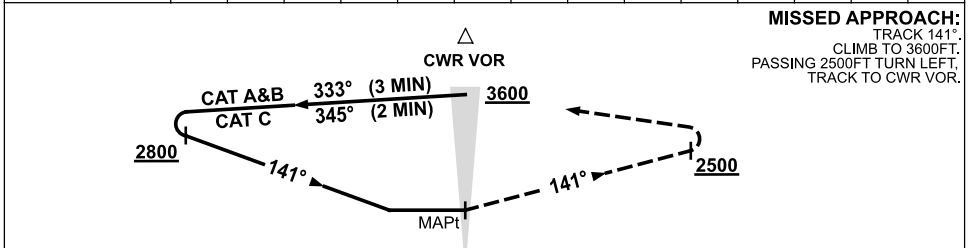
VOR-A

COWRA, NSW (YCWR)

3 JUN 2010



DME DIST	NOT APPLICABLE									
ALT										



NOTES

1. MAX IAS:
HOLDING: 210KT.
INITIAL:
CAT A&B 140KT.
CAT C 210KT.
- * 2. NO CIRCLING E OF RWY 15/33 BEYOND 2NM.
- ** 3. PROC TURN (80°/260°) REQD TO JOIN PROC FROM HOLD.

CATEGORY	A	B	C	D
				NOT APPLICABLE
CIRCLING *	1780 (814-2.4)		1880 (914-4.0)	
ALTERNATE	(1314-4.4)		(1414-6.0)	

Changes: NOTE3, CO-ORD FORMAT.

CWRVO01-123