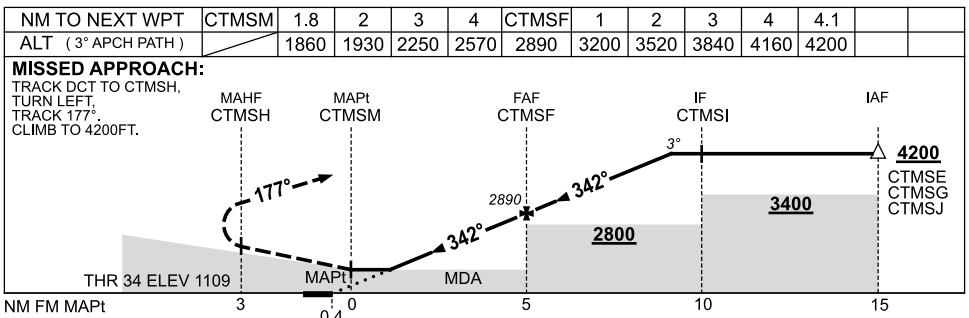
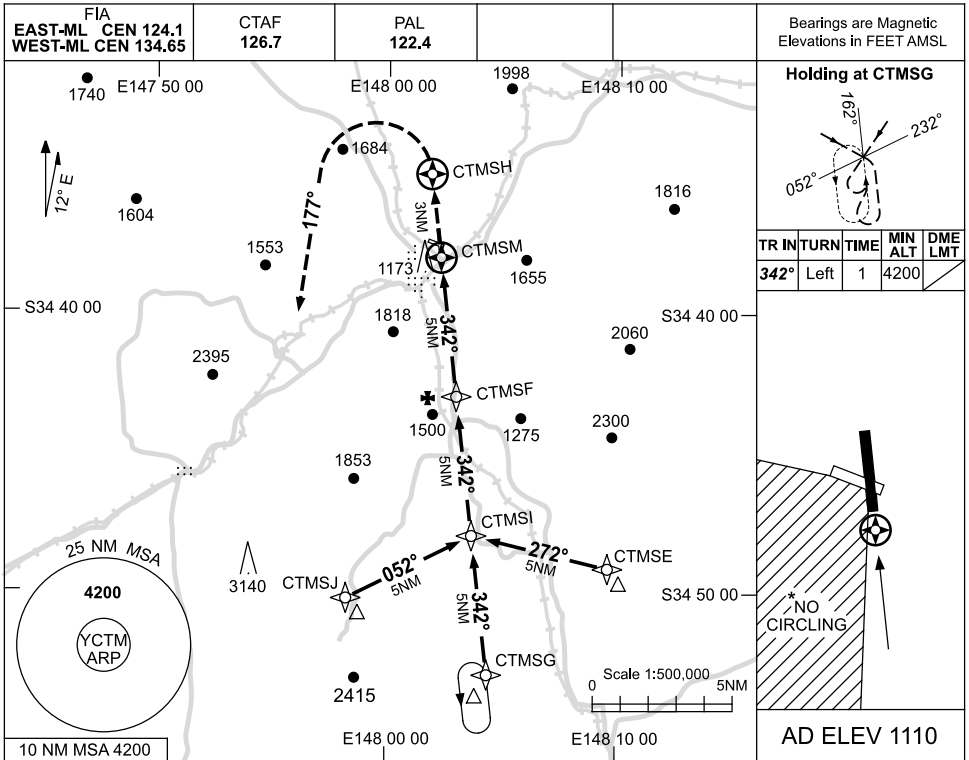


USE QNH

RNAV-Z (GNSS) RWY 34

18 AUG 2016

COOTAMUNDRA, NSW (YCTM)



NOTES

* 1. NO CIRCLING SW OF RWY 10 & 34.

CATEGORY	A	B	C	D
S-I GNSS	1860 (750-4.3)		NOT APPLICABLE	
CIRCLING *	2100 (990-2.4)			
ALTERNATE	(1490-4.4)			

Changes: MINIMA, DIST/ALT TABLE, SDF.

CTMGN02-148