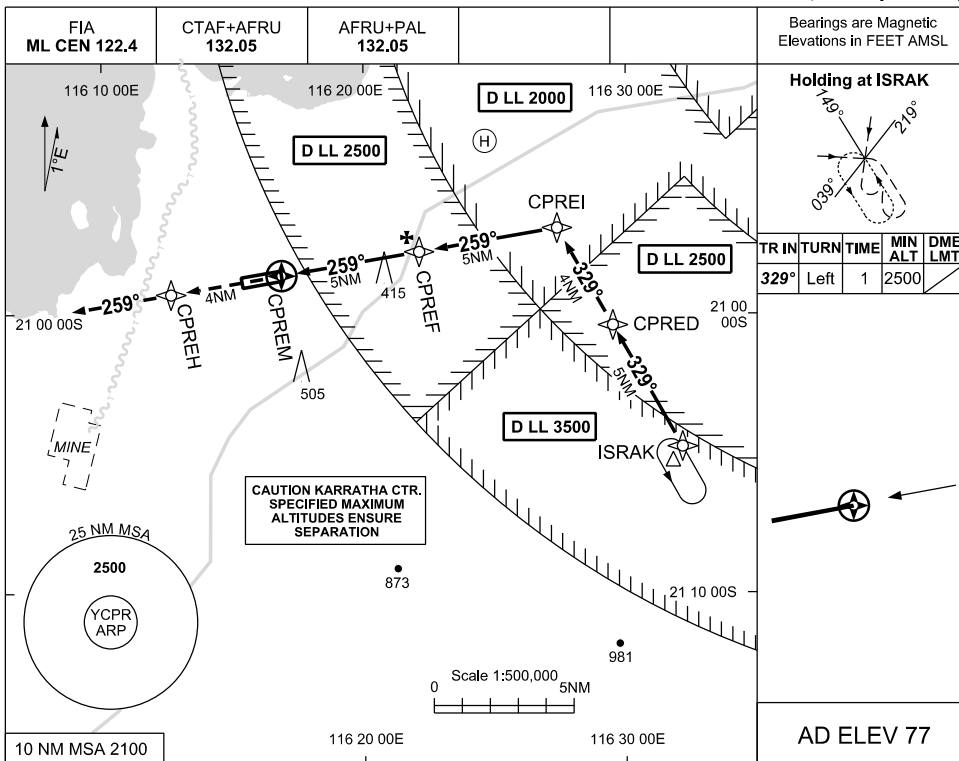


USE QNH

RNAV (GNSS) RWY 26

CAPE PRESTON, WA (YCPR)

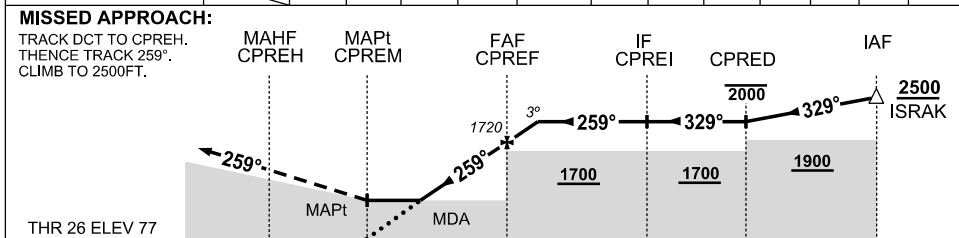
5 NOV 2020



TR	INTURN	TIME	MIN ALT	DME LMT
329°	Left	1	2500	

AD ELEV 77

NM TO NEXT WPT	CPREM	1.5	2	3	4	CPREF	0.9					
ALT (3° APCH PATH)		610	760	1080	1400	1720	2000					



**NOTES**

- MAX IAS : INITIAL: 210KT HOLDING: 210KT
- PROC OVERLAID BY KARRATHA CLASS D AIRSPACE . CLR RQ TO ENTER CTA
- HEL OPS 9NM ENE ARP (DEVILS CREEK)

CATEGORY	A	B	C	D
LNAV	610 (533-2.8)			NOT AUTHORISED
CIRCLING	850 (773-2.4)		1050(973-4.0)	
ALTERNATE	(1273-4.4)		(1473-6.0)	

Changes: FROM SUP H80/20

CPRGN02-165

