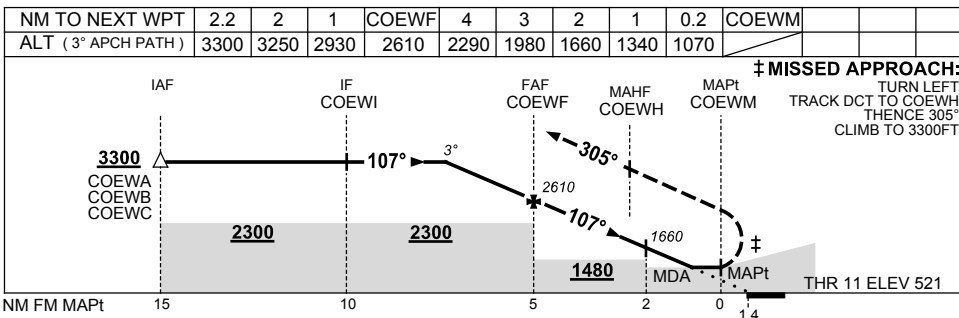
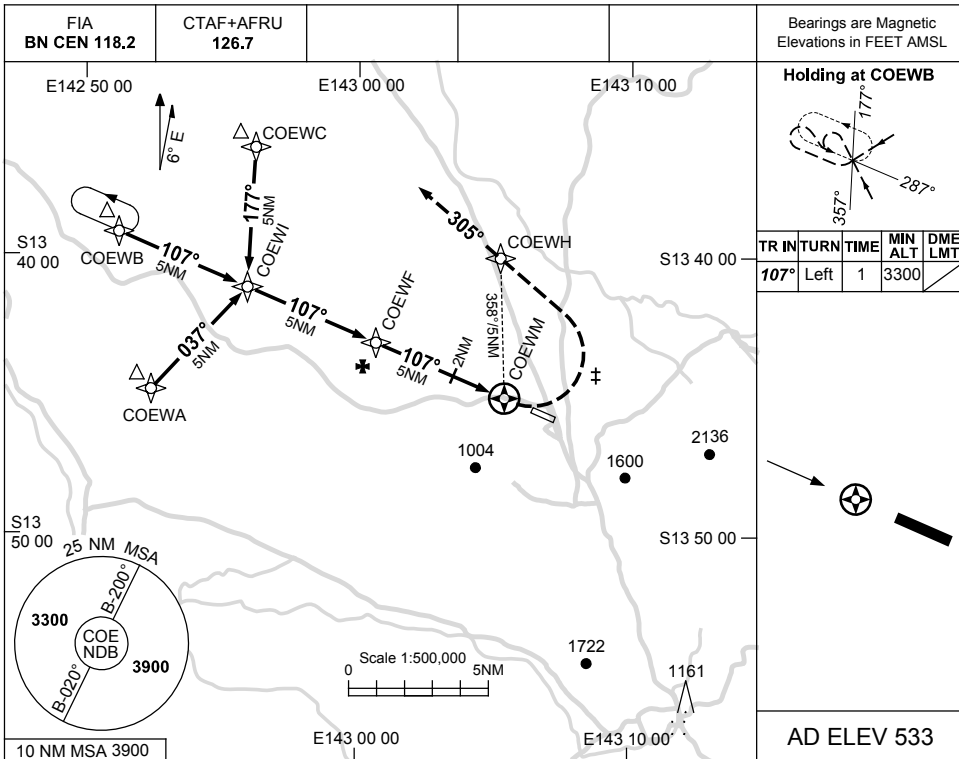


USE QNH

RNAV-Z<sup>(GNSS)</sup> RWY 11  
**COEN, QLD (YCOE)**

25 MAY 2017



**NOTES**

CATEGORY	A	B	C	D
S-I GNSS	<b>1070 (549-3.1)</b>			NOT APPLICABLE
CIRCLING	<b>1710 (1177-2.4)</b>		<b>2470 (1937-4.0)</b>	
ALTERNATE	(1677-4.4)		(2437-6.0)	

- 1. MAX IAS: INITIAL : 210KT.
- ‡ MAP TURN: 180KT.

Changes: AFRU, RWY 11 THR ELEV.

COEGN01-151