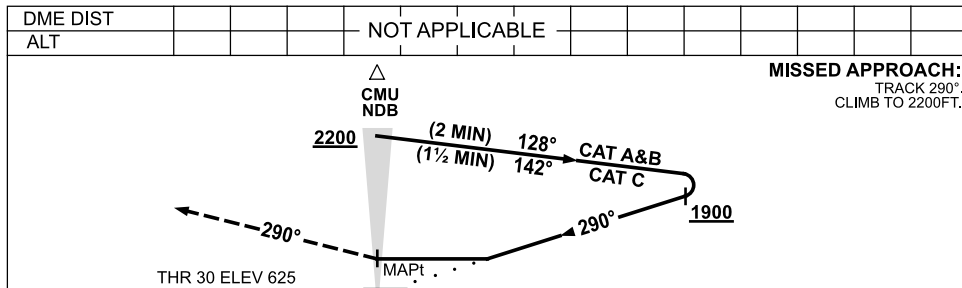
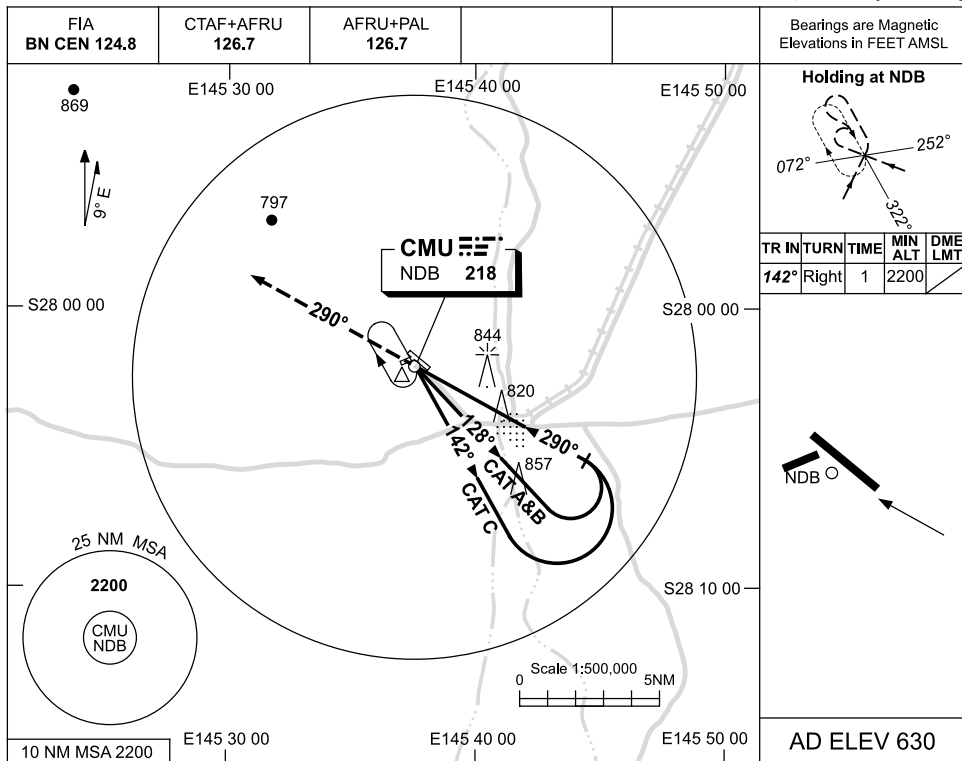


USE QNH

NDB RWY 30

3 MAR 2016

CUNNAMULLA, QLD (YCMU)



NOTES

CATEGORY	A	B	C	D
S-I NDB	1290 (660-3.8)			NOT APPLICABLE
CIRCLING	1290 (660-2.4)	1390 (760-4.0)		
ALTERNATE	(1160-4.4)		(1260-6.0)	

1. MAX IAS:
INITIAL : 210KT.

Changes: PROFILE DIAGRAM.

CMUNB01-146