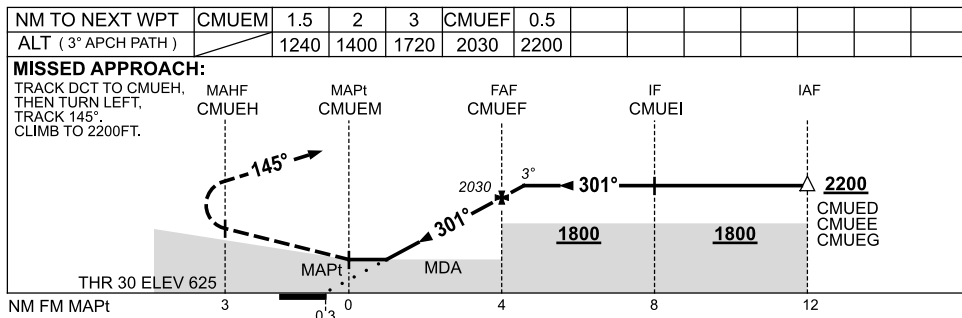
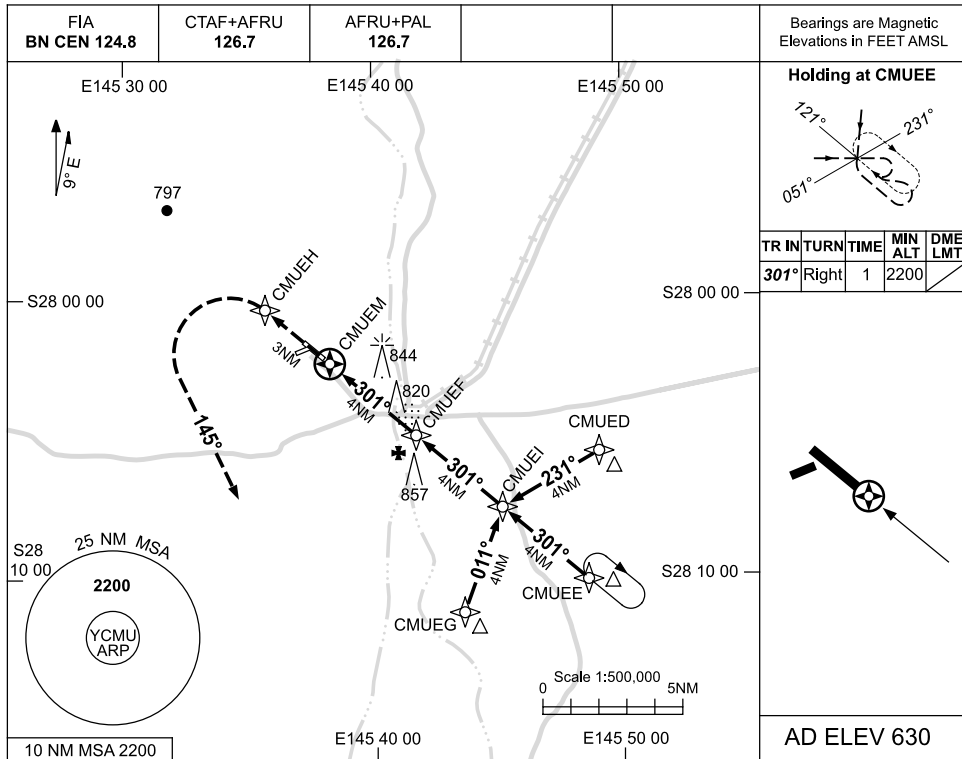


USE QNH

RNAV-Z (GNSS) RWY 30
CUNNAMULLA, QLD (YCMU)

5 MAR 2015



NOTES

| CATEGORY | A | B | C | D |
|-----------|-----------------------|-----------------------|---|----------------|
| S-I GNSS | 1240 (610-3.5) | | | NOT APPLICABLE |
| CIRCLING | 1290 (660-2.4) | 1390 (760-4.0) | | |
| ALTERNATE | (1160-4.4) | (1260-6.0) | | |

1. MAX IAS: INITIAL : 210KT.

Changes: MINIMA, MSA.

CMUGN02-142