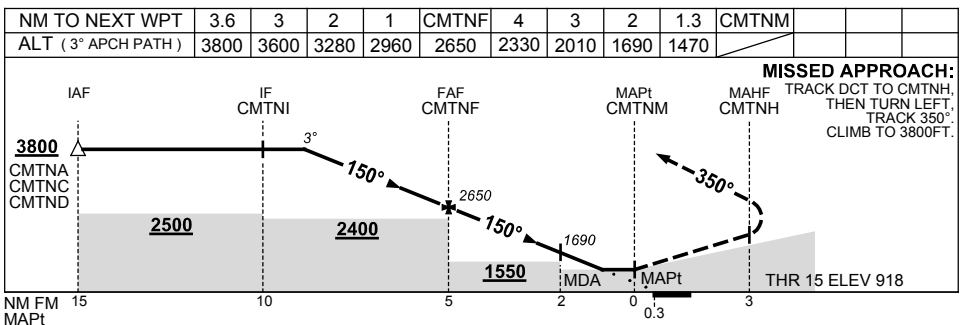
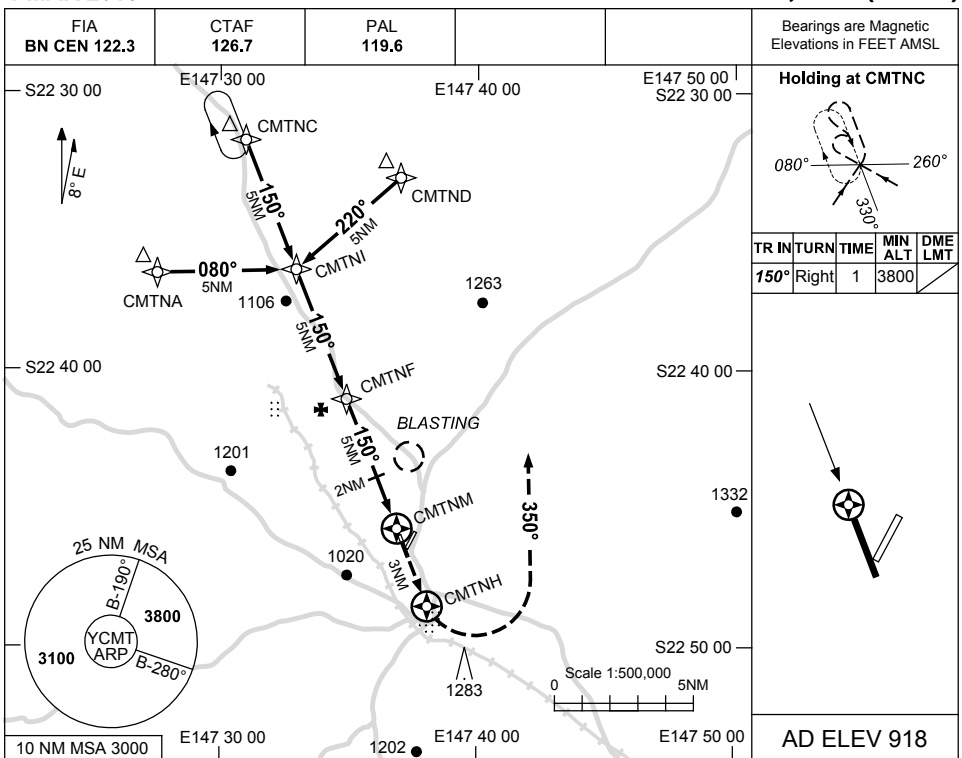


USE QNH

RNAV (GNSS) RWY 15

CLERMONT, QLD (YCMT)

1 MAR 2018



CATEGORY	A	B	C	D
LNAV	1470 (552-3.1)			NOT APPLICABLE
CIRCLING	1570 (652-2.4)		1780 (862-4.0)	
ALTERNATE	(1152-4.4)		(1362-6.0)	

- NOTES**
- MAX IAS:
INITIAL : 210KT.
 - BLASTING: SEE AD
CHART FOR TIMES.

Changes: 2NM SDF, DIST/ALT TABLE.

CMTGN01-154