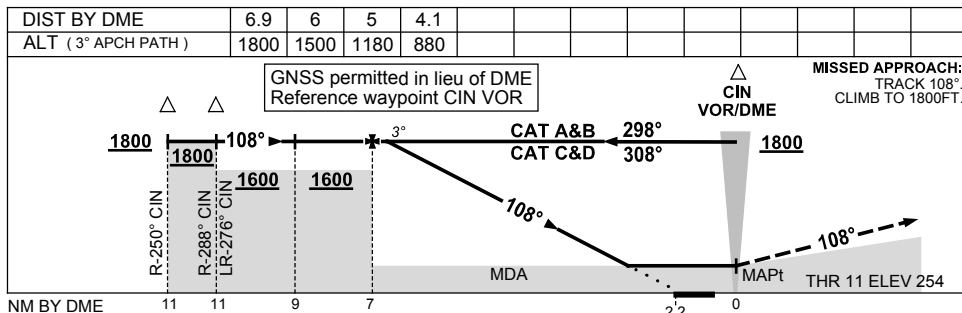
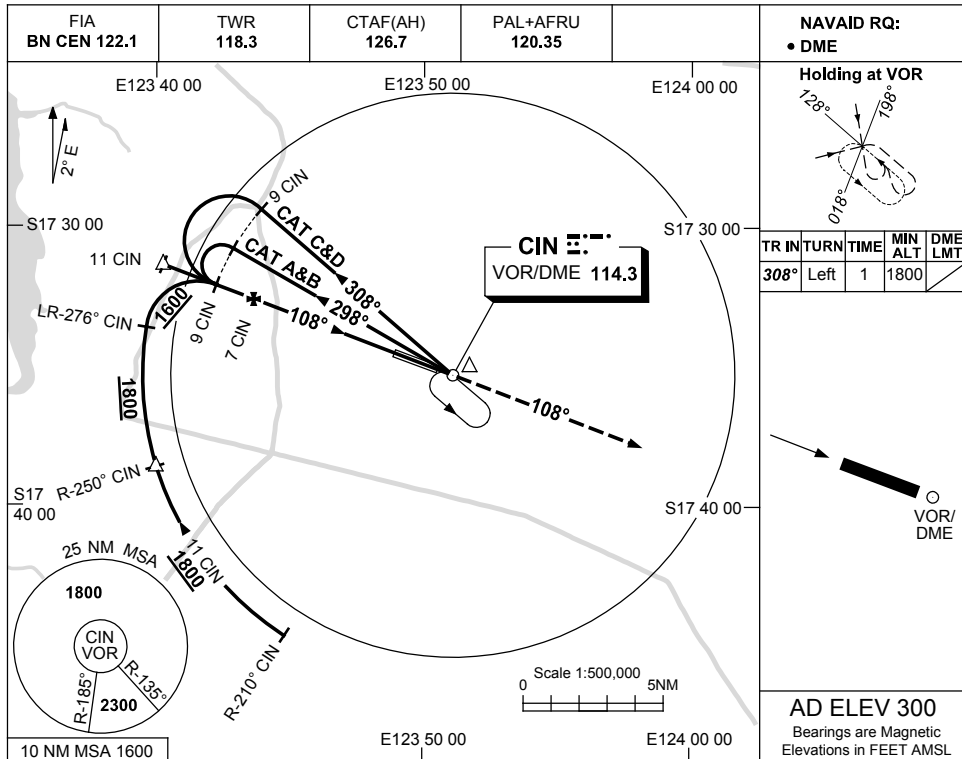


USE QNH

VOR-Z RWY 11
CURTIN, WA (YGIN)

9 NOV 2017



NOTES

CATEGORY	A	B	C	D
S-I VOR/DME	880 (626-3.6)			
CIRCLING	930 (630-2.4)	1030 (730-4.0)	1090 (790-5.0)	
ALTERNATE	(1130-4.4)	(1230-6.0)	(1290-7.0)	

- MAX IAS: INITIAL : 210KT.
- AWIS (PHONE) 08 9462 8729

Changes: DIST/ALT TABLE, S-I VIS, AFRU.

CINVO02-153