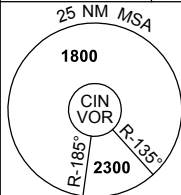


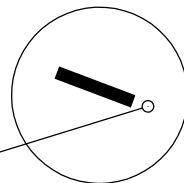
DME or GNSS ARRIVAL PROCEDURES CURTIN, WA (YCIN)

9 NOV 2017

FIA BN CEN 122.1	TWR 118.3	CTAF(AH) 126.7	PAL+AFRU 120.35	Bearings are Magnetic Elevations in FEET AMSL
---------------------	--------------	-------------------	--------------------	--



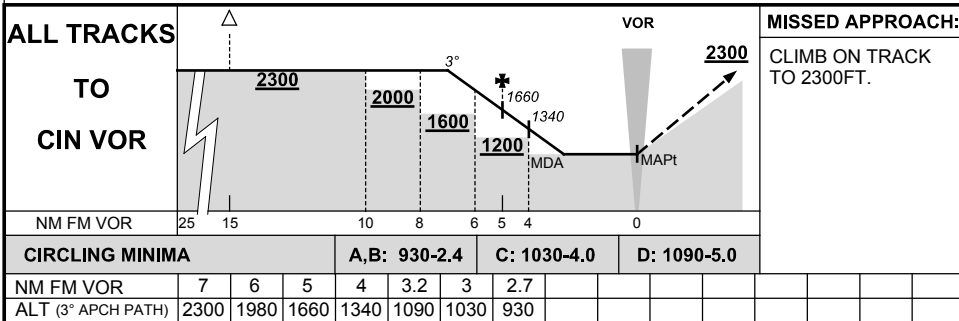
**DME USING CIN DME
REFERENCE WAYPOINT CIN VOR**
AWIS (PHONE) 08 9462 8729



CIN **VOR/DME 114.3**

10 NM MSA 1600

AD ELEV 300



Changes: INITIAL MIN SEG ALT, AFRU.