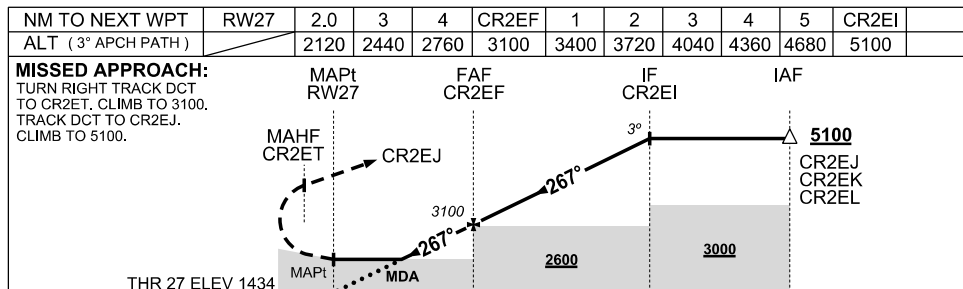
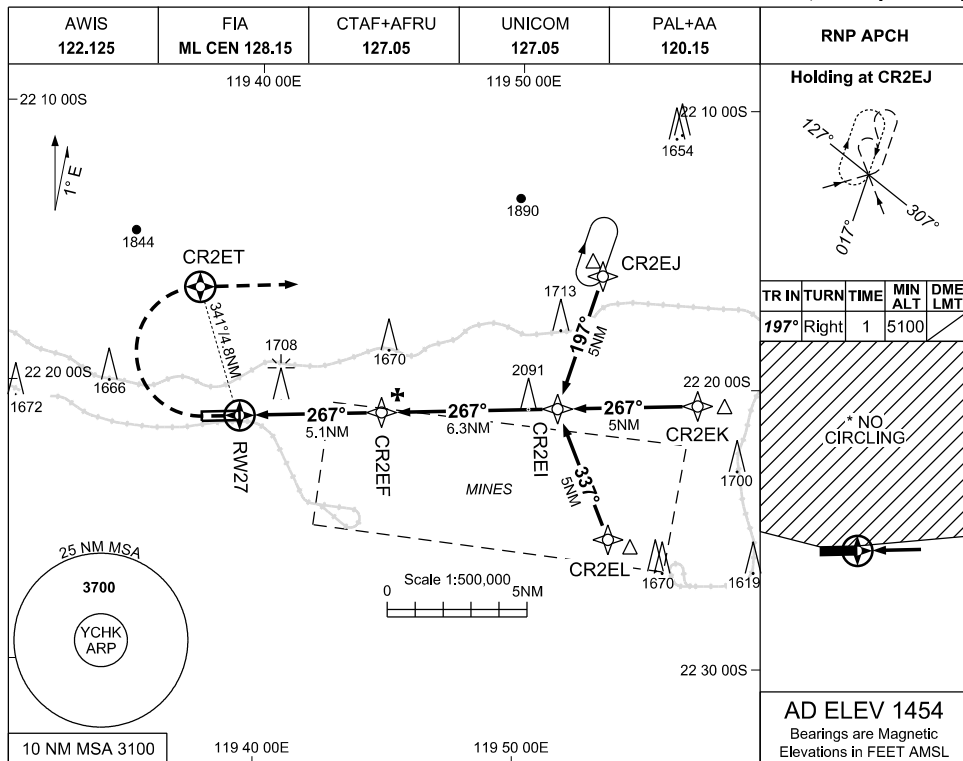


USE QNH

RNP RWY 27

30 NOV 2023

CHRISTMAS CREEK, WA (YCHK)



NM TO RW27

CATEGORY	A	B	C	D
LNAV	2120 (686-3.9)			
* CIRCLING	2140(686-2.4)		2260 (806-4.0) 2260 (806-5.0)	
ALTERNATE	(1186-4.4)		(1306-6.0) (1306-7.0)	

NOTES

- MAX IAS: 210KT
INITIAL: 210KT
MAP TURN: 195KT
HOLDING: 210KT
CAT D
CIRCLING: 185KT
- NO CIRCLING N OF RWY 09/27.
- CAUTION:** PROC OVERLAID BY PROCS AT YDF. AIRCRAFT SEPARATION IS NOT ASSURED.

Changes: CHART TITLE, EDITORIAL

CHKGN02-177

