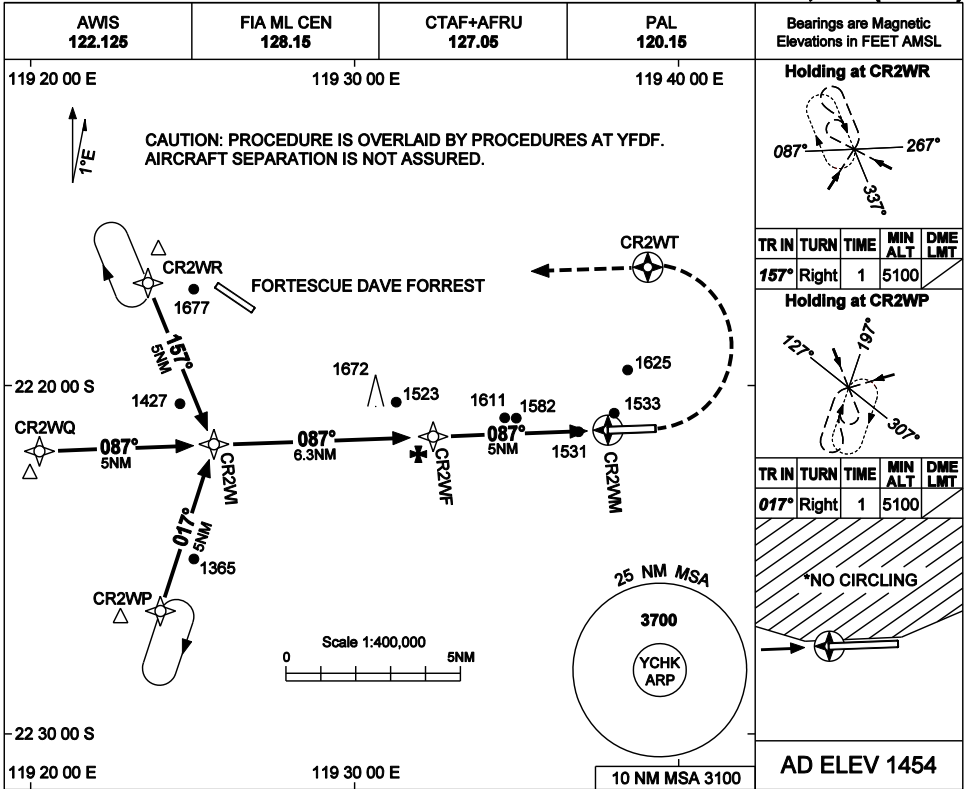


USE QNH

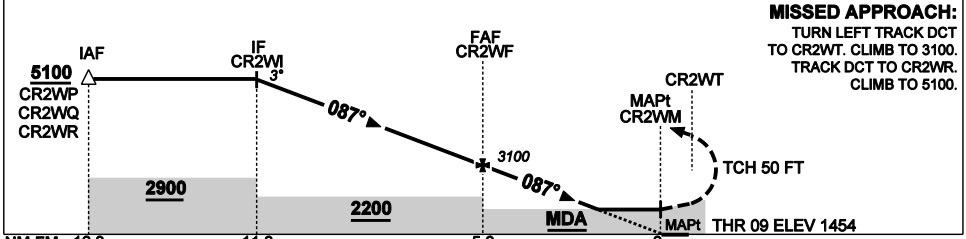
RNAV-Z (GNSS) RWY 09

9 SEP 2021

CHRISTMAS CREEK, WA (YCHK)



NM TO NEXT WPT	CR2WI	5	4	3	2	1	CR2WF	4	3	2	1.6	CR2WM
ALT (3° APCH PATH)	5100	4700	4380	4060	3740	3420	3100	2780	2460	2140	2010	



MISSED APPROACH:
 TURN LEFT TRACK DCT TO CR2WT. CLIMB TO 3100.
 TRACK DCT TO CR2WR. CLIMB TO 5100.

NM FM MAPt	16.3	11.3	5.0	0
MAPt				THR 09 ELEV 1454

NOTES

- 1. MAX IAS:
 - INITIAL: 210 KIAS
 - MAP TURN: 195 KIAS
 - HOLDING: 210 KIAS.
 - CAT D CIRCLING: 185 KIAS.
- *2. NO CIRCLING NORTH OF RWY 09/27.

CATEGORY	A	B	C	D
LNAV	2110 (656-3.7)			
CIRCLING*	2120 (666-3.9)	2130 (676-3.9)	2260 (806-4.4)	
ALTERNATE	(1166-5.9)	(1176-5.9)	(1306-6.4)	

Changes: S-I GNSS to LNAV.

CHKGN01-168

