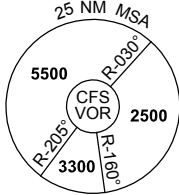


DME or GNSS ARRIVAL PROCEDURES COFFS HARBOUR, NSW (YCFS) Page 2

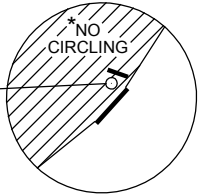
28 FEB 2019

ATIS 117.0 130.3	AWIS (AH) 122.475	TWR 118.2	CTAF+AFRU (AH) 118.2	FIA (AH) BN CEN 122.6	AFRU+PAL (AH) 118.2	Bearing are Magnetic Elevations in FEET AMSL
---------------------	----------------------	--------------	-------------------------	--------------------------	------------------------	---



**DME USING CFS DME
REFERENCE WAYPOINT CFS VOR**

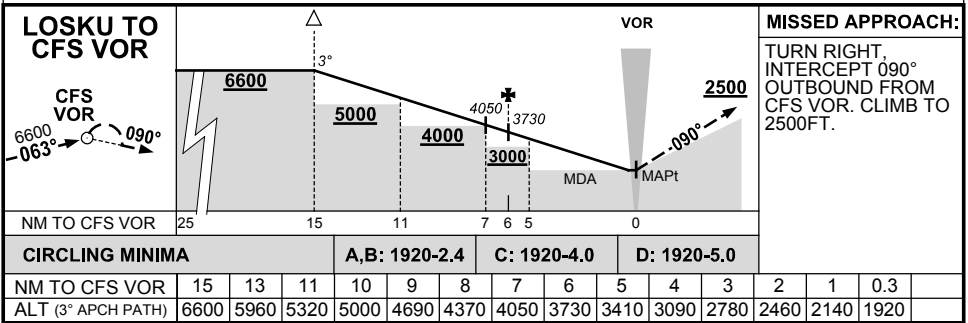
CFS
VOR/DME 117.0



* NO CIRCLING W
OF RWY 03/21.

AD ELEV 18

10 NM MSA 5000



Changes: AWIS 122.475 CMSD, AWIS PH DELETED, Editorial.