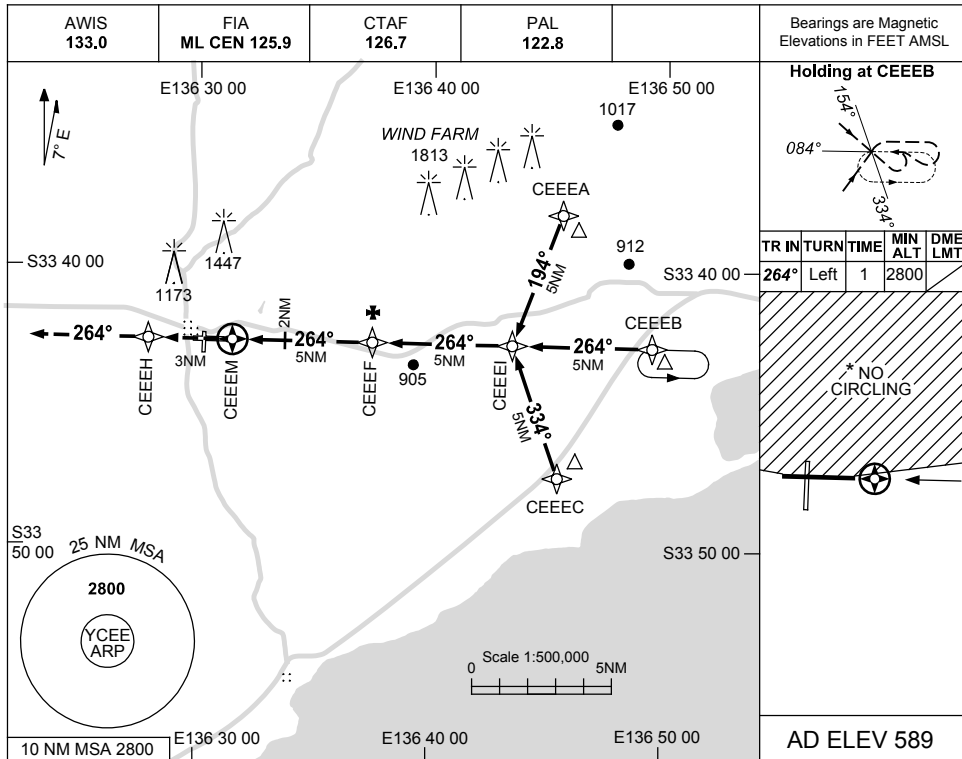


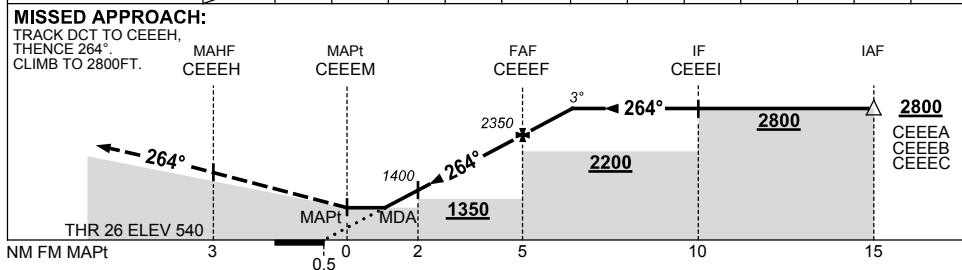
USE QNH

RNAV_(GNSS) RWY 26
CLEVE, SA (YCEE)

25 MAY 2017



NM TO NEXT WPT	CEEEM	1.6	2	3	4	CEEEF	1	1.4				
ALT (3° APCH PATH)		1260	1400	1720	2040	2350	2670	2800				



NOTES

CATEGORY	A	B	C	D
S-I GNSS	1260 (720-4.1)			NOT APPLICABLE
CIRCLING *	1480 (891-2.4)	1650 (1061-4.0)		
ALTERNATE	(1391-4.4)	(1561-6.0)		

- MAX IAS: INITIAL : 230KT.
- NO CIRCLING NORTH OF RWY 08/26.

Changes: AWIS PHONE DELETED.

CEEGN01-151