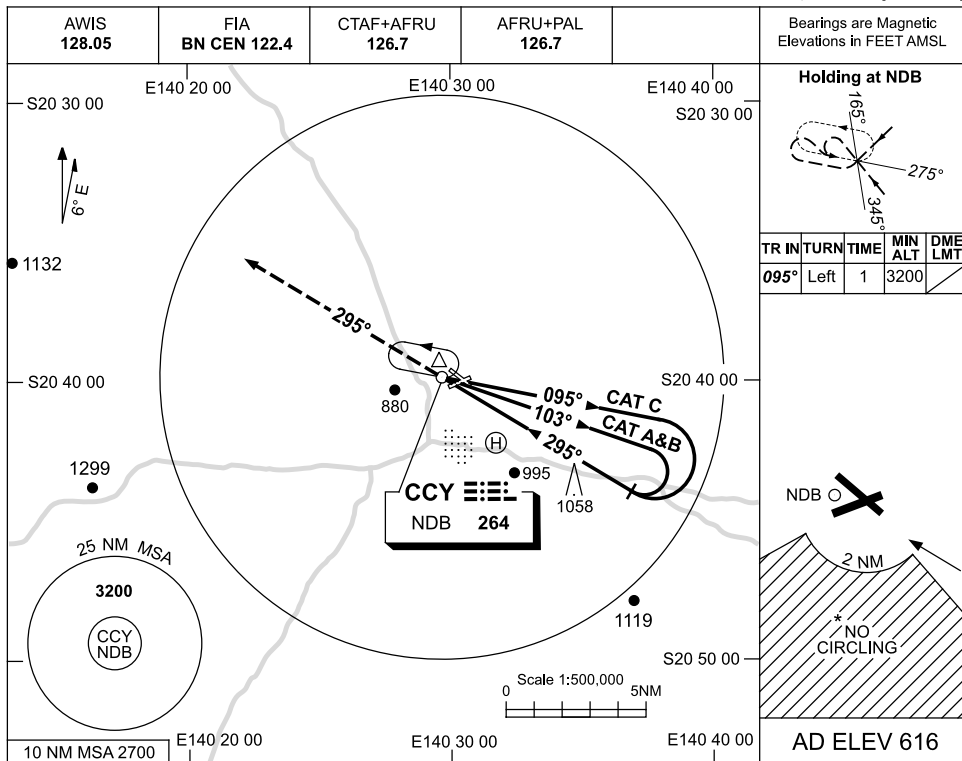


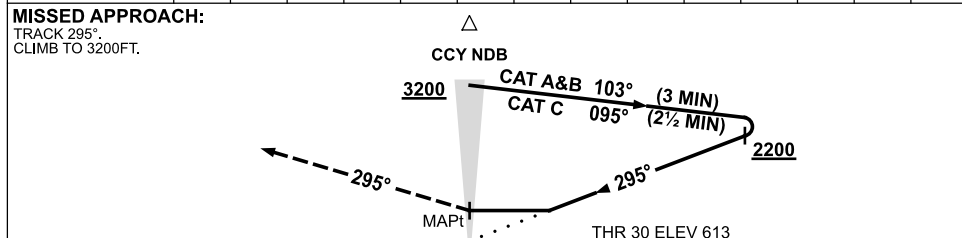
USE QNH

NDB RWY 30  
**CLONCURRY, QLD (YCCY)**

6 MAR 2014



DME DIST	NOT APPLICABLE			
ALT				



**NOTES**

CATEGORY	A	B	C	D
S-I NDB	<b>1570 (954-5.0)</b>			NOT APPLICABLE
CIRCLING *	<b>1570 (954-2.4)</b>	<b>1570 (954-4.0)</b>		
ALTERNATE	(1454-4.4)	(1454-6.0)		

1. MAX IAS:  
INITIAL : 210KT.
- \* 2. NO CIRCLING IN SECTOR SOUTH OF RWYS 06 AND 30 BEYOND 2NM.

Changes: MAG VAR, HELIPAD, TRACKS.

CCYNB02-138