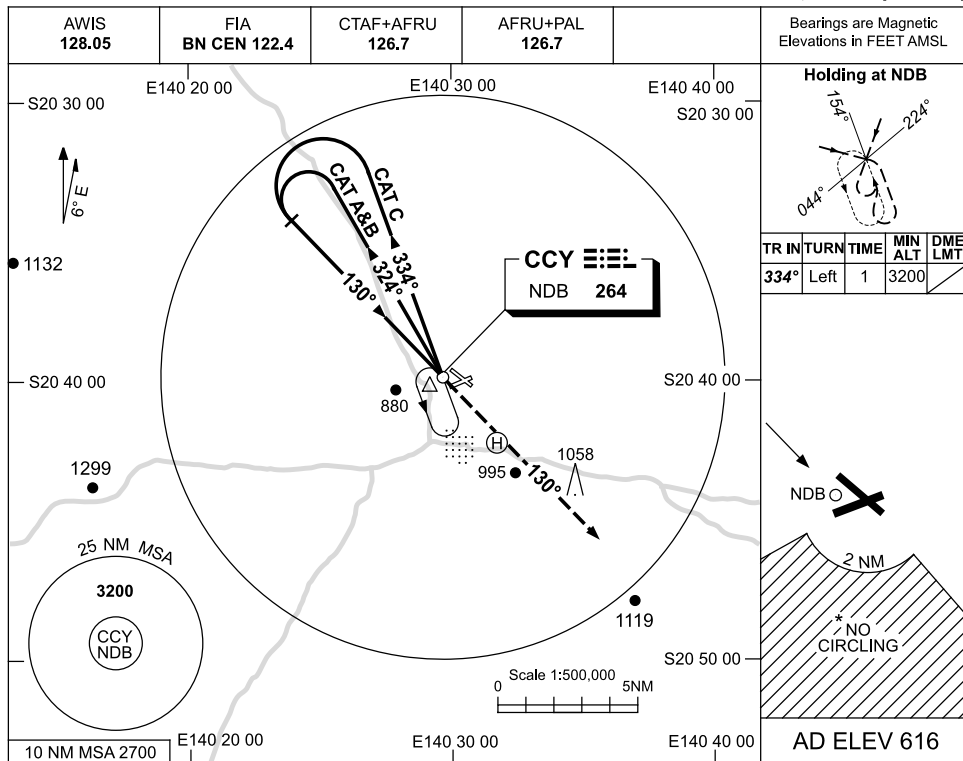


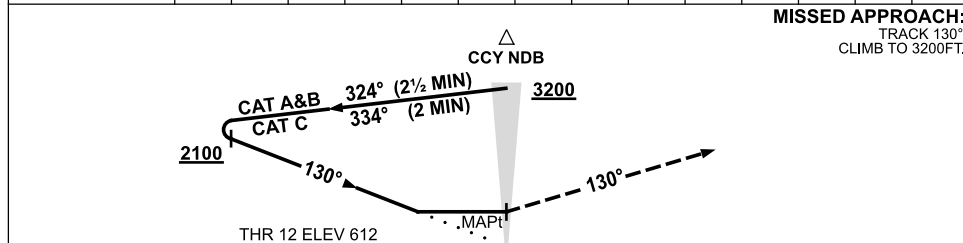
USE QNH

NDB RWY 12  
**CLONCURRY, QLD (YCCY)**

6 MAR 2014



DME DIST			NOT APPLICABLE						
ALT									



**NOTES**

CATEGORY	A	B	C	D
S-I NDB	<b>1300</b> (684-3.9)			NOT APPLICABLE
CIRCLING *	<b>1570</b> (954-2.4)		<b>1570</b> (954-4.0)	
ALTERNATE	(1454-4.4)		(1454-6.0)	

1. MAX IAS:  
INITIAL : 210KT.
- \* 2. NO CIRCLING IN  
SECTOR SOUTH OF  
RWYS 06 AND 30  
BEYOND 2NM.

Changes: MAG VAR, HELIPAD, TRACKS.

CCYNB01-138