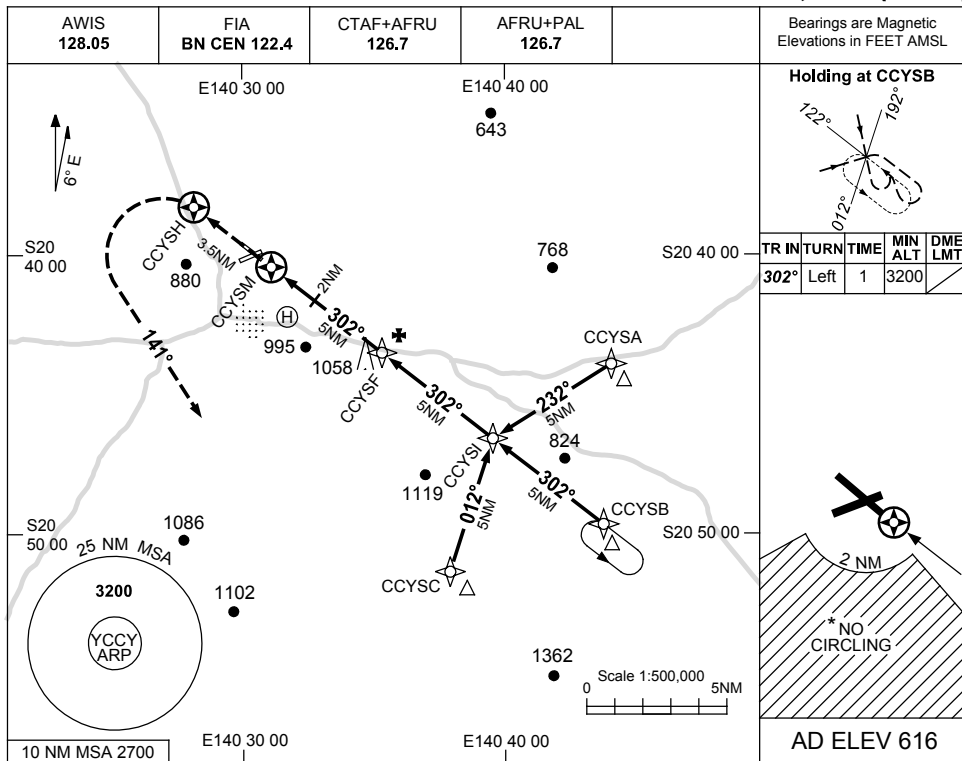


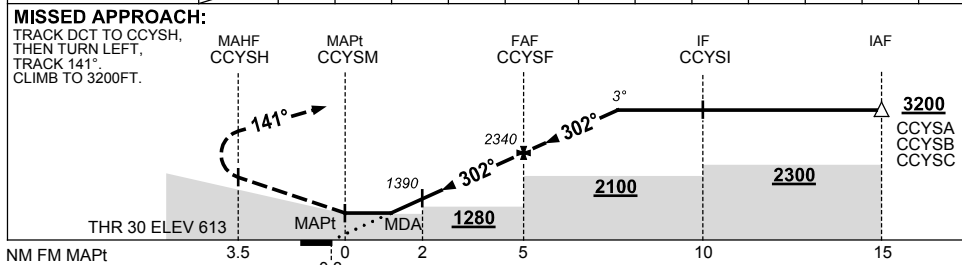
USE QNH

RNAV-Z (GNSS) RWY 30
CLONCURRY, QLD (YCCY)

2 MAR 2017



NM TO NEXT WPT	CCYSM	1.5	2	3	4	CCYSF	1	2	2.7				
ALT (3° APCH PATH)		1210	1390	1700	2020	2340	2660	2980	3200				



NOTES

CATEGORY	A	B	C	D
S-I GNSS	1210 (594-3.3)			NOT APPLICABLE
CIRCLING *	1570 (954-2.4)		1570 (954-4.0)	
ALTERNATE	(1454-4.4)		(1454-6.0)	

1. MAX IAS: INITIAL : 210KT.
 * 2. NO CIRCLING IN SECTOR SOUTH OF RWYS 06 AND 30 BEYOND 2NM.

Changes: CCYSH FLY OVER, MSA REF POINT, DIST/ALT SACLE.

CCYGN02-150