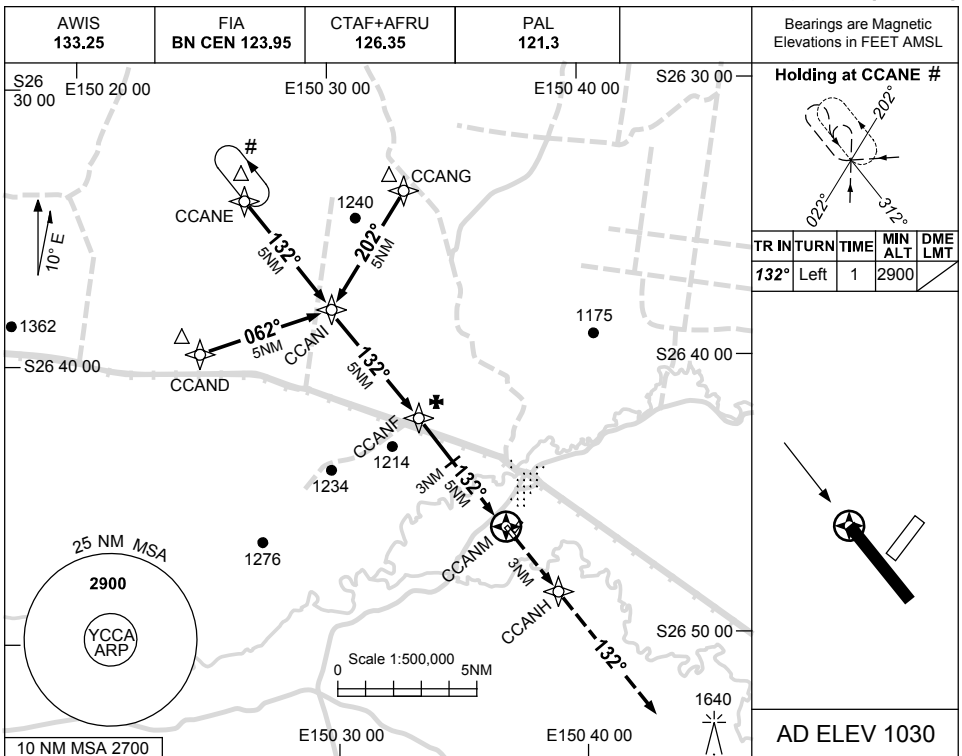


USE QNH

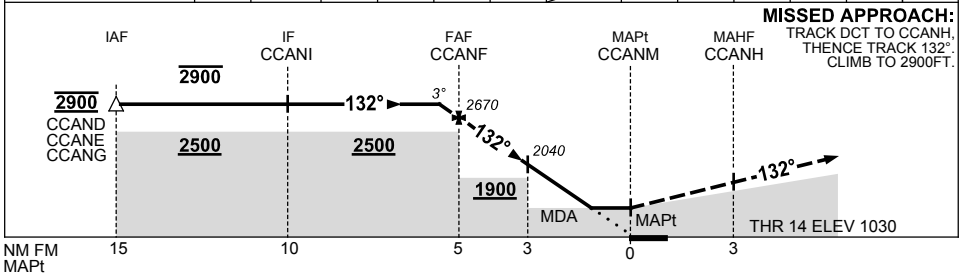
RNAV-Z (GNSS) RWY 14

CHINCHILLA, QLD (YCCA)

1 MAR 2018



NM TO NEXT WPT	0.7	CCANF	4	3	2	1.4	CCANM						
ALT (3° APCH PATH)	2900	2670	2350	2040	1720	1530							



NOTES

CATEGORY	A	B	C	D
LNAV	1530 (500-2.8)			NOT APPLICABLE
CIRCLING	1630 (600-2.4)		1810 (780-4.0)	
ALTERNATE	(1100-4.4)		(1280-6.0)	

1. MAX IAS:
INITIAL : 210KT.
2. CAUTION: HLDG NOT
ABV 2900FT DUE TO
OVERLYING PROC AT
YMLS.

Changes: MINIMA.

CCAGN01-154