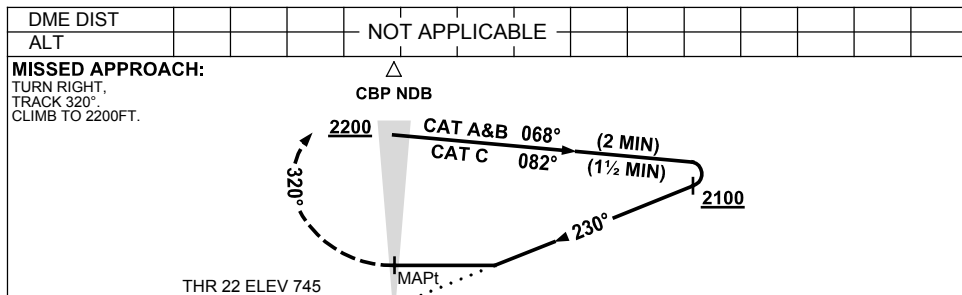
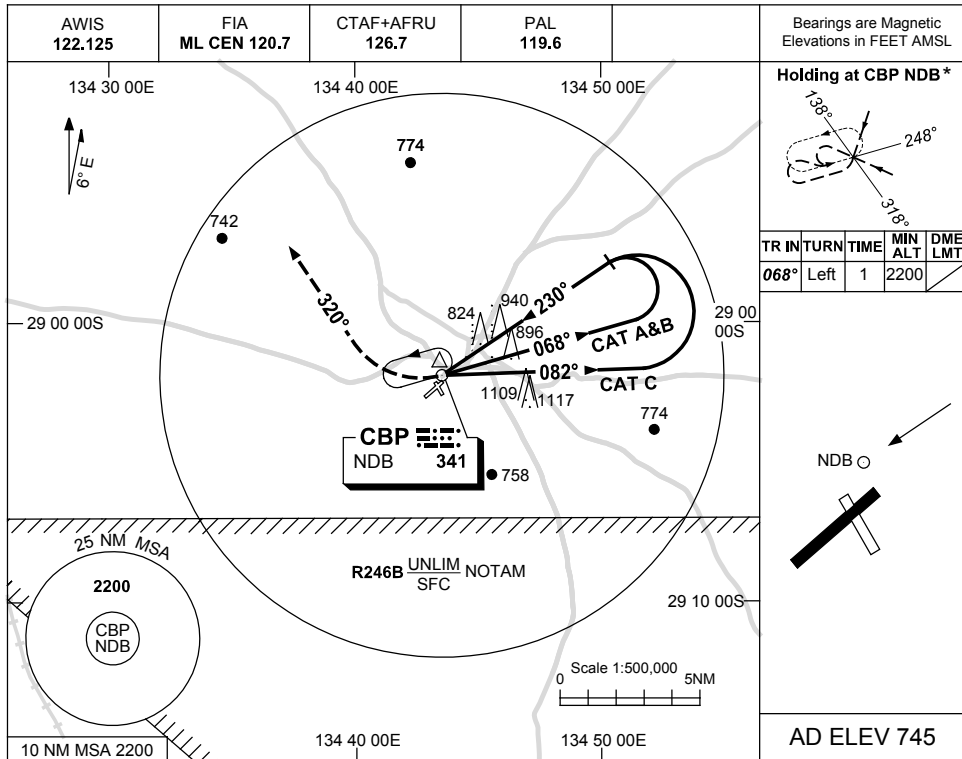


USE QNH

NDB RWY 22
COOBER PEDY, SA (YCBP)

13 AUG 2020



NOTES

CATEGORY	A	B	C	D
S-I NDB	1390 (645-3.7)			NOT APPLICABLE
CIRCLING	1390 (645-2.4)		1620 (875-4.0)	
ALTERNATE	(1145-4.4)		(1375-6.0)	

1. MAX IAS:
 INITIAL : 210KT
 HOLDING: 180KT.
- * 2. HOLDING NOT AVBL
 WHEN R246B ACTIVE.

Changes: AD ELEV, THR ELEV, MINIMA, COORD FMT, Editorial.

CBPNB01-164