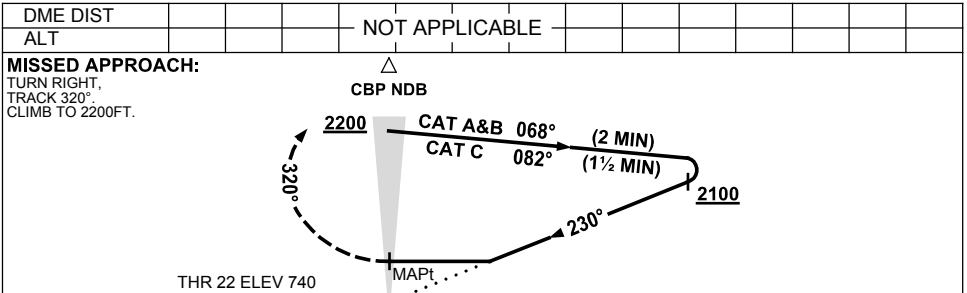
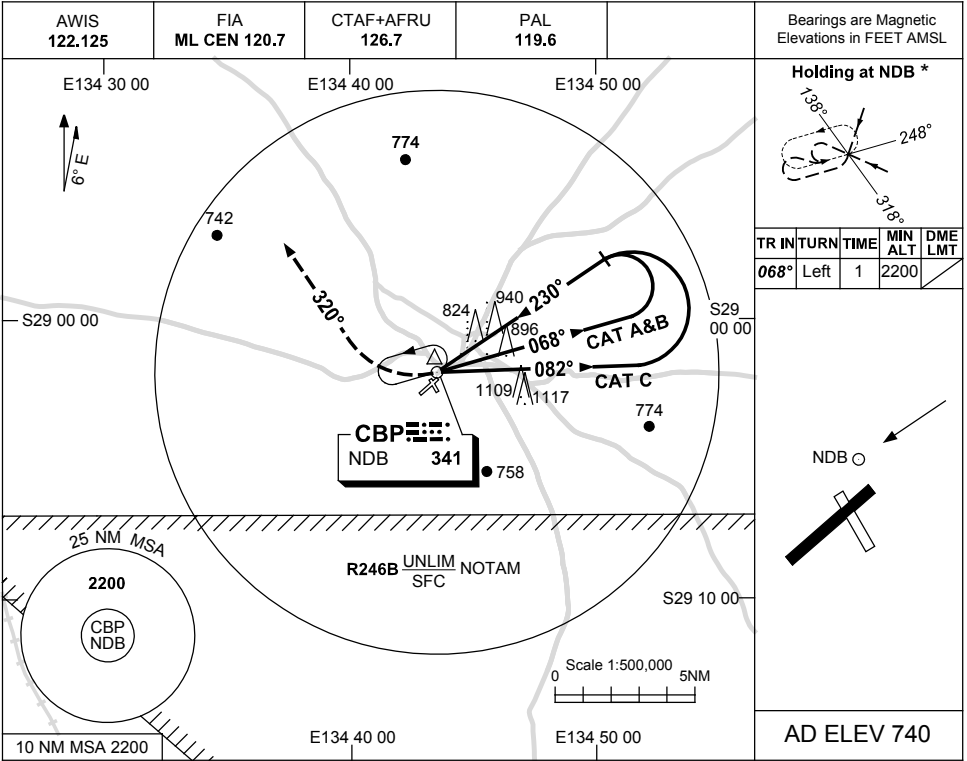


USE QNH

NDB RWY 22
COOBER PEDY, SA (YCBP)

25 MAY 2017



NM BY DME

NOTES

1. MAX IAS:
 INITIAL : 210KT
 HOLDING: 180KT.
- * 2. HOLDING NOT AVBL
 WHEN R246B ACTIVE.

CATEGORY	A	B	C	D
S-I NDB	1390 (650-3.7)			NOT APPLICABLE
CIRCLING	1390 (650-2.4)		1620 (880-4.0)	
ALTERNATE	(1150-4.4)		(1380-6.0)	

Changes: DELETE NOTE 3.

CBPNB01-151