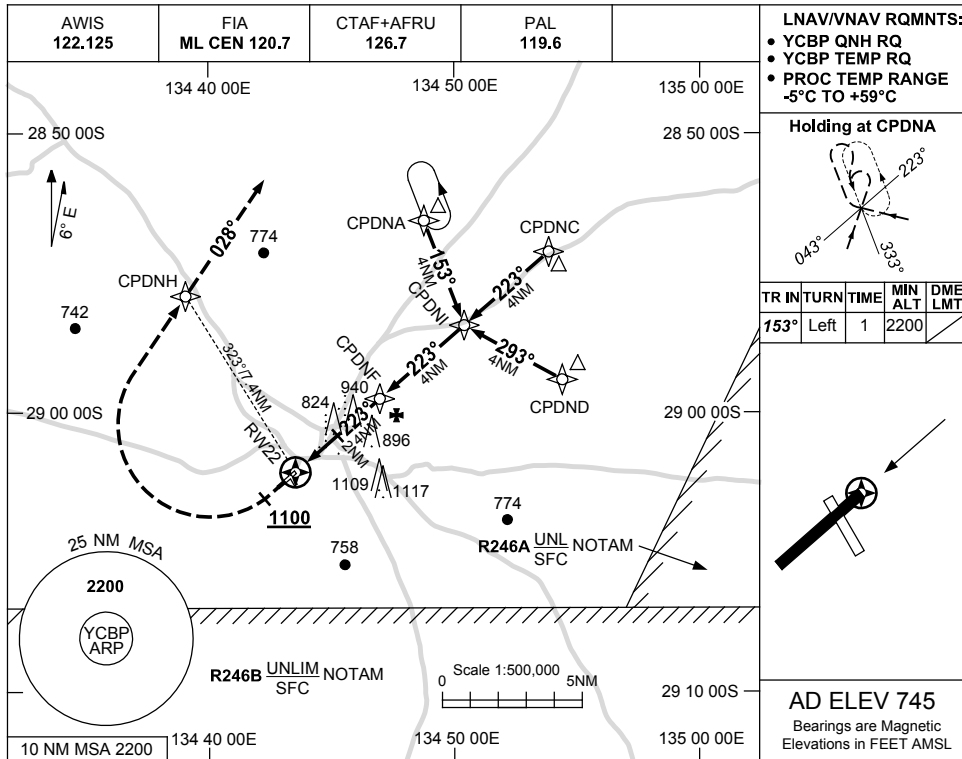


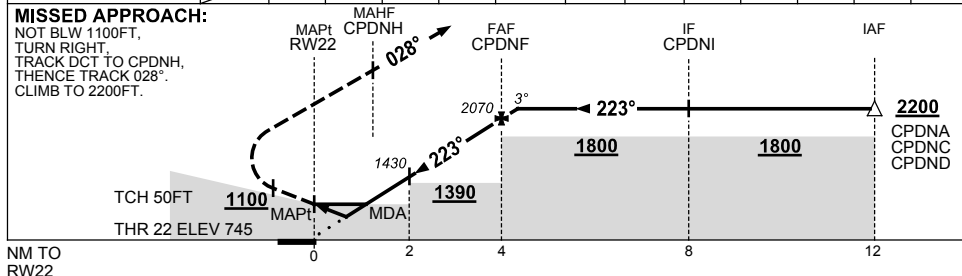
USE QNH

RNAV-Z (GNSS) RWY 22
COOBER PEDY, SA (YCBP)

13 AUG 2020



NM TO NEXT WPT	RW22	0.9	1.5	2	3	CPDNF	0.4						
ALT (3° APCH PATH)		1080	1270	1430	1750	2070	2200						



NOTES

CATEGORY	A	B	C	D
LNAV/VNAV	1080 (335-1.9)			NOT APPLICABLE
LNAV	1270 (525-3.0)			
CIRCLING	1390 (645-2.4)		1620 (875-4.0)	
ALTERNATE	(1145-4.4)		(1375-6.0)	

1. MAX IAS:
INITIAL : 210KT.

Changes: AD ELEV, THR ELEV, RW22, LNAV/VNAV RQMNTS, LNAV/VNAV MINIMA, MISSED APPROACH, COORD FMT, REVISED PROCEDURE, Editorial. CBPGN02-164

