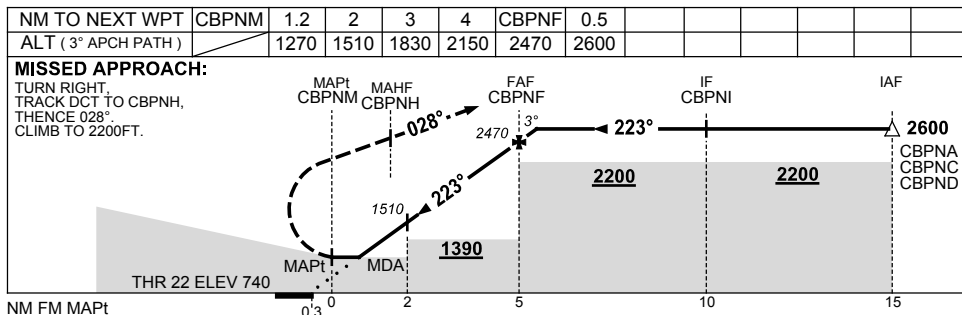
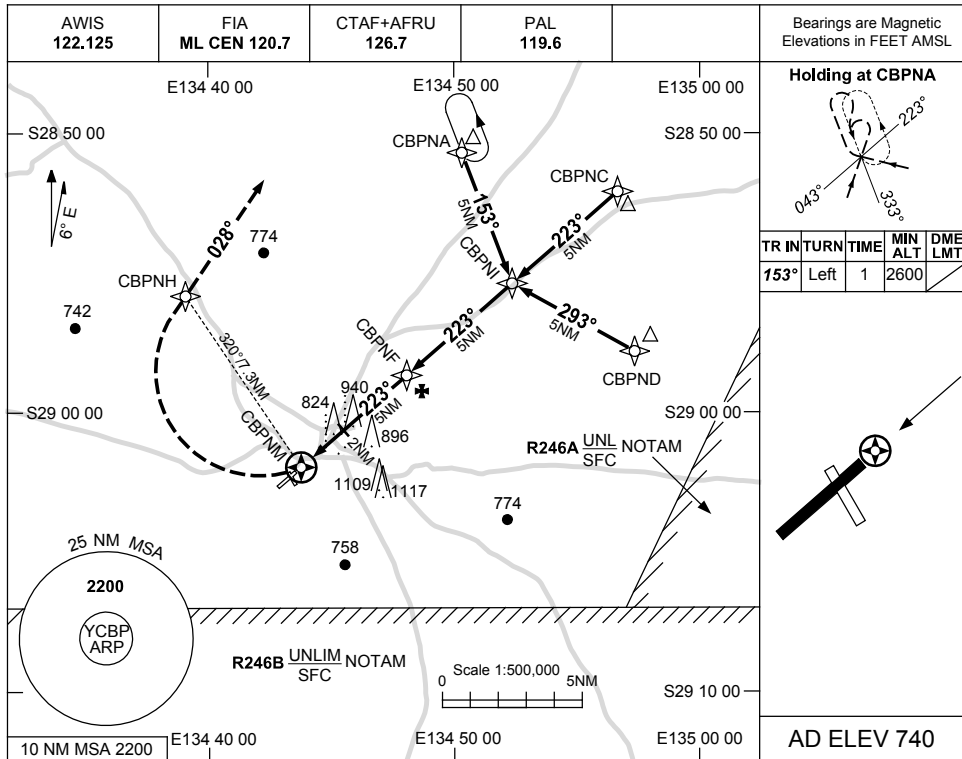


USE QNH

RNAV-Z<sub>(GNSS)</sub> RWY 22  
**COOBER PEDY, SA (YCBP)**

25 MAY 2017



**NOTES**

CATEGORY	A	B	C	D
S-I GNSS	1270 (530-3.0)			NOT APPLICABLE
CIRCLING	1390 (650-2.4)		1620 (880-4.0)	
ALTERNATE	(1150-4.4)		(1380-6.0)	

1. MAX IAS:  
 INITIAL : 230KT.

Changes: NOTE 2 DELETED.

CBPGN02-151