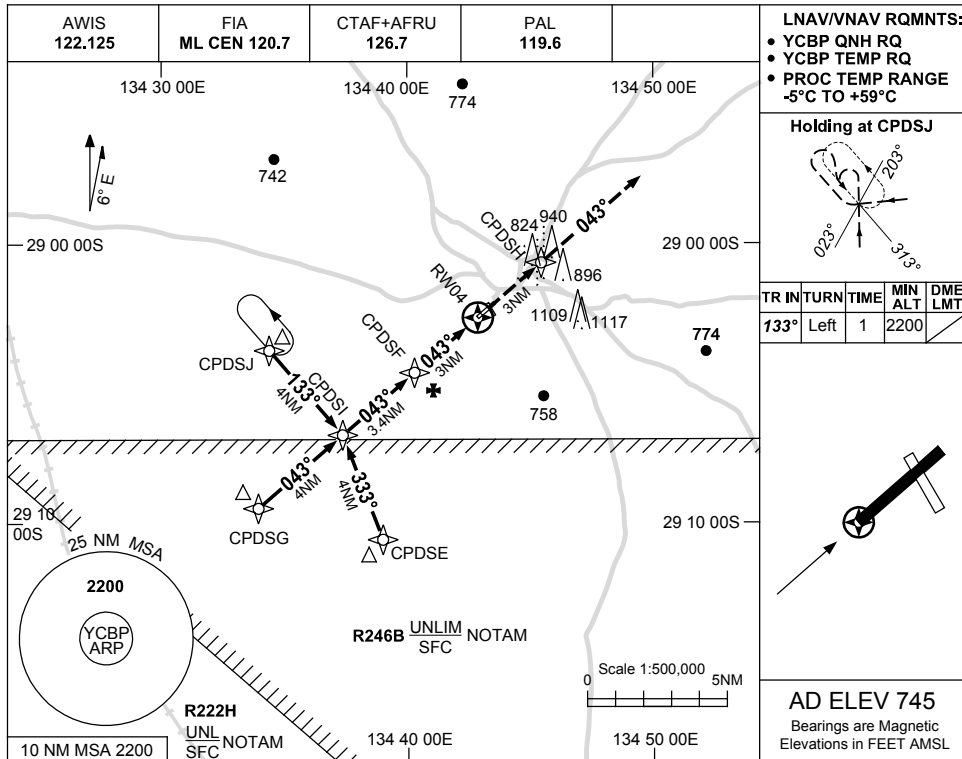


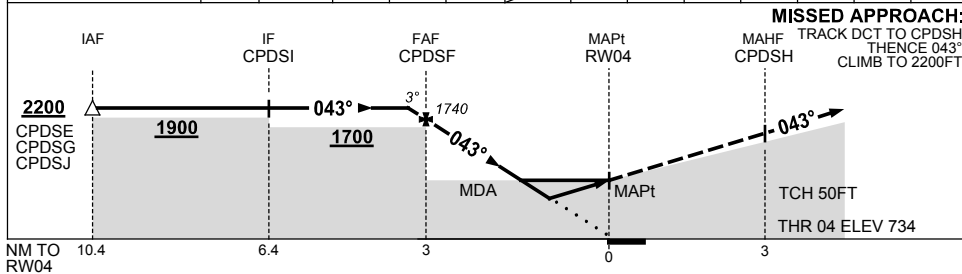
USE QNH

RNAV-Z (GNSS) RWY 04
COOBER PEDY, SA (YCBP)

13 AUG 2020



NM TO NEXT WPT	1.4	CPDSF	2	1.5	0.9	RW04												
ALT (3° APCH PATH)	2200	1740	1420	1270	1080													



NOTES

CATEGORY	A	B	C	D
LNAV/VNAV		1080 (346-1.9)		NOT APPLICABLE
LNAV		1270 (536-3.0)		
CIRCLING	1390 (645-2.4)		1620 (875-4.0)	
ALTERNATE	(1145-4.4)		(1375-6.0)	

- MAX IAS: INITIAL : 210KT.
- PROC NOT AVBL WHEN R246B ACTIVE.

Changes: AD ELEV, THR ELEV, LNAV/VNAV RQMNTS, LNAV/VNAV MINIMA, LNAV MINIMA, COORD FMT, TCH 50FT, Editorial. CBPGN01-164