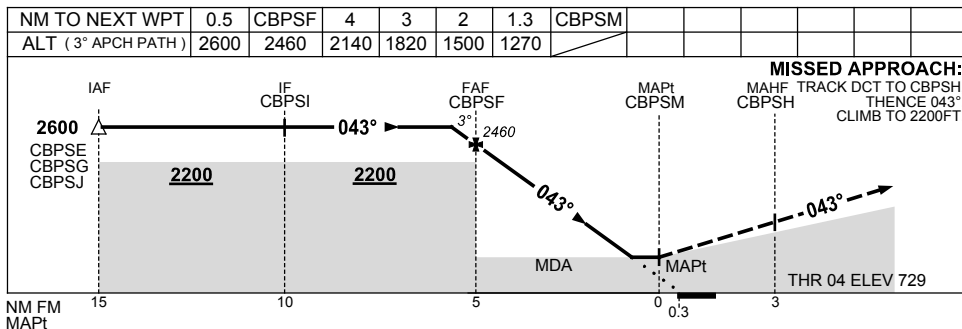
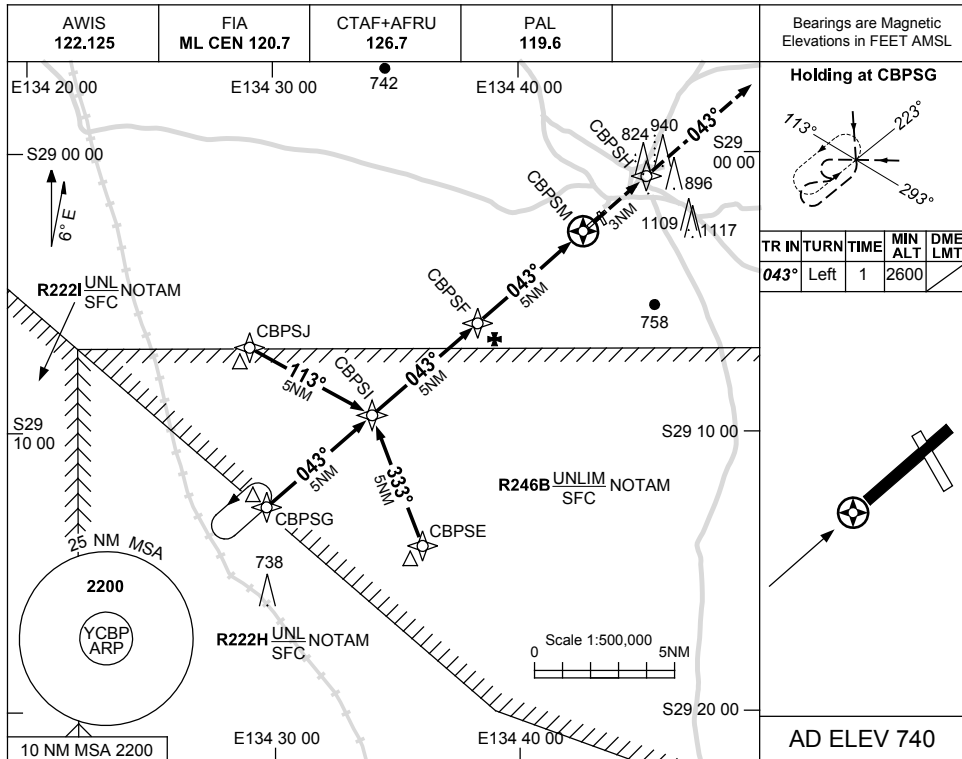


USE QNH

RNAV-Z_(GNSS) RWY 04
COOBER PEDY, SA (YCBP)

25 MAY 2017



NOTES

CATEGORY	A	B	C	D
S-I GNSS	1270 (541-3.1)			NOT APPLICABLE
CIRCLING	1390 (650-2.4)	1620 (880-4.0)		
ALTERNATE	(1150-4.4)	(1380-6.0)		

Changes: DELETE NOTE 3.

CBPGN01-151