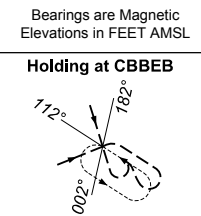
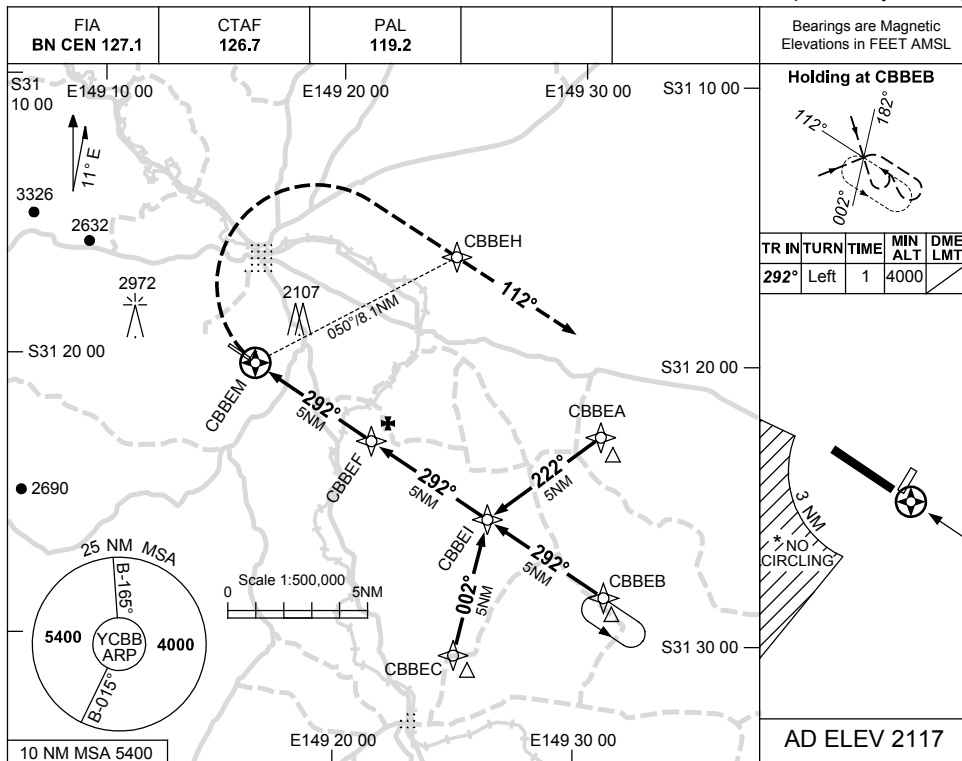


USE QNH

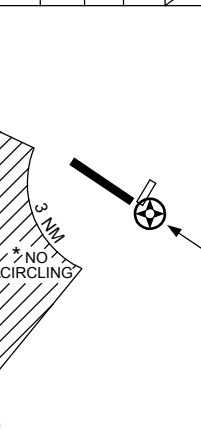
RNAV_(GNSS) RWY 29

25 MAY 2017

COONABARABRAN, NSW (YCBB)

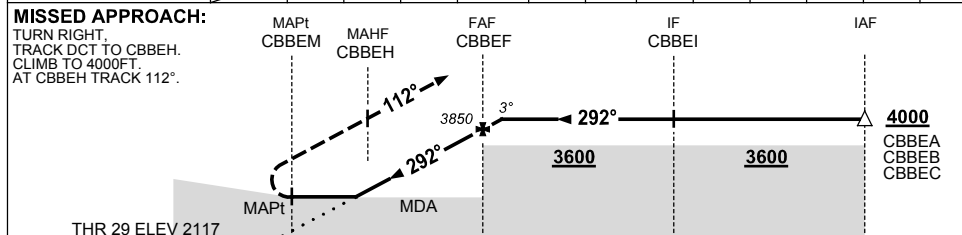


TR	IN	TURN	TIME	MIN ALT	DME LMT
292°	Left		1	4000	



AD ELEV 2117

NM TO NEXT WPT	CBBEM	1.5	3	4	CBBEF	0.5				
ALT (3° APCH PATH)		2720	3210	3530	3850	4000				



NM FM MAPt

NOTES

CATEGORY	A	B	C	D
S-I GNSS	2720 (603-3.4)			NOT APPLICABLE
CIRCLING *	2900 (783-2.4)		3130 (1013-4.0)	
ALTERNATE	(1283-4.4)		(1513-6.0)	

- MAX IAS: INITIAL : 210KT.
- NO CIRCLING IN SECTOR STH-WEST OF RWY 11 & RWY 01 BEYOND 3NM.
- AWIS (PHONE) 02 8302 7515

Changes: NOTE 3.

CBBGN01-151