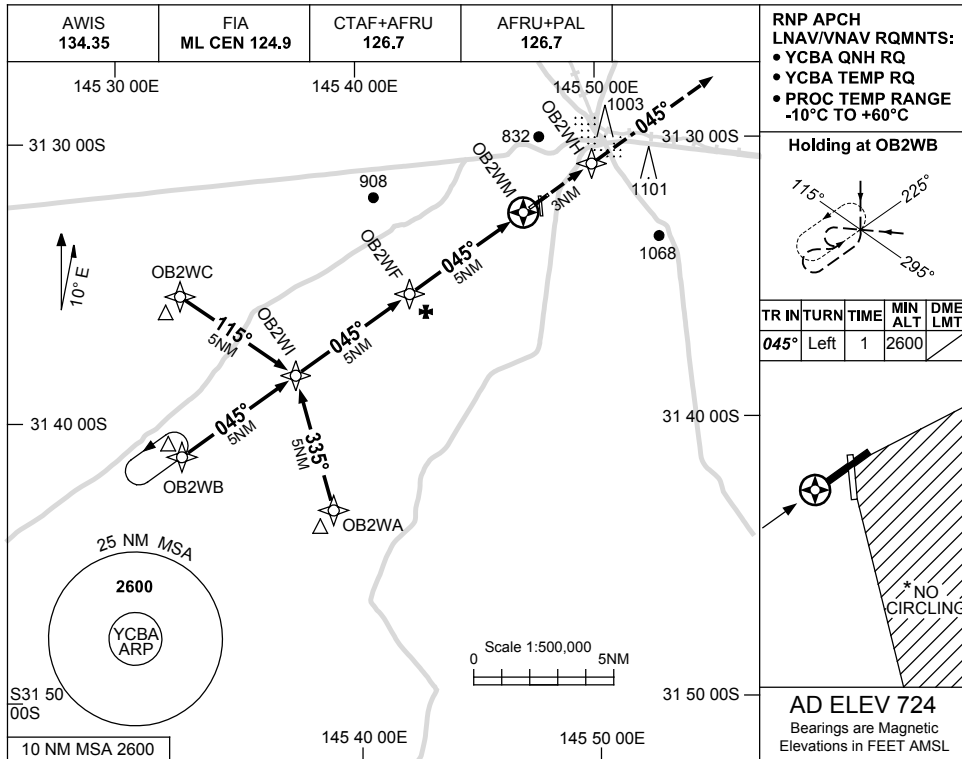


USE QNH

RNP RWY 05
COBAR, NSW (YCBA)

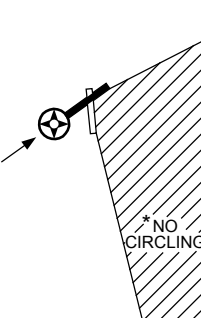
15 JUN 2023



RNP APCH
 LNAV/VNAV RQMNTS:
 • YCBA QNH RQ
 • YCBA TEMP RQ
 • PROC TEMP RANGE
 -10°C TO +60°C

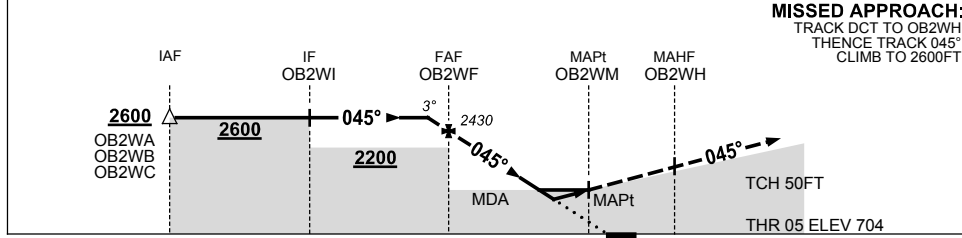


TR	IN	TURN	TIME	MIN ALT	DME LMT
045°	Left	1	2600		



AD ELEV 724
 Bearings are Magnetic
 Elevations in FEET AMSL

NM TO NEXT WPT	0.5	OB2WF	4	3	2	1.4	1	0.8	OB2WM
ALT (3° APCH PATH)	2600	2430	2110	1800	1480	1270	1160	1080	



MISSED APPROACH:
 TRACK DCT TO OB2WH,
 THENCE TRACK 045°,
 CLIMB TO 2600FT.

NOTES

CATEGORY	A	B	C	D
LNAV/VNAV		1080 (376-2.1)		NOT APPLICABLE
LNAV		1270 (566-3.2)		
CIRCLING *	1390 (666-2.4)		1550 (826-4.0)	
ALTERNATE	(1166-4.4)		(1326-6.0)	

- MAX IAS:
INITIAL : 210KT.
- * NO CIRCLING SOUTH-EAST OF RWY 23 & RWY 35.

Changes: NO CIRCLING AREA, WPT NAMING CONVENTION, Editorial.

CBAGN02-175