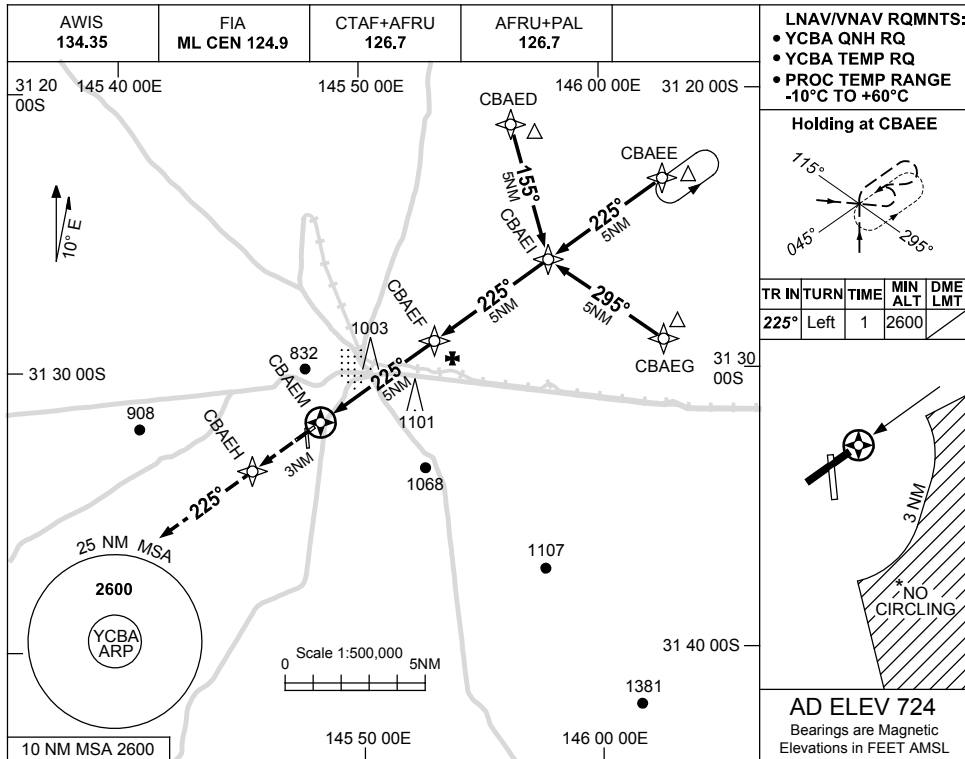


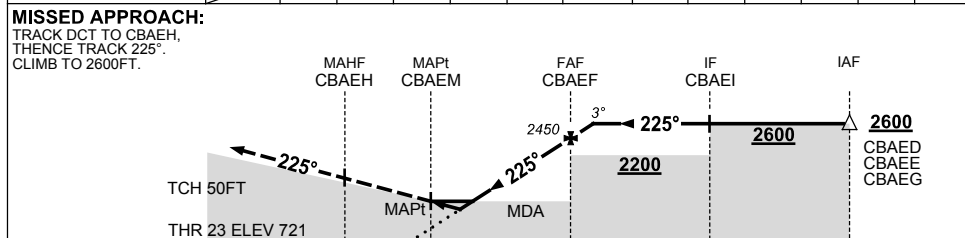
USE QNH

RNAV-Z^(GNSS) RWY 23
COBAR, NSW (YCBA)

5 NOV 2020



NM TO NEXT WPT	CBAEM	0.5	1.5	2	3	4	CBAEF	0.5						
ALT (3° APCH PATH)		1010	1340	1490	1810	2130	2450	2600						



NM TO CBAEM 3 0.3 5 10 15

NOTES

CATEGORY	A	B	C	D
LNAV/VNAV		1010 (289-1.6)		NOT APPLICABLE
LNAV		1340 (616-3.5)		
CIRCLING *	1390 (666-2.4)		1550 (826-4.0)	
ALTERNATE	(1166-4.4)		(1326-6.0)	

1. MAX IAS: INITIAL : 210KT.
- * 2. NO CIRCLING SOUTH-EAST OF RWY 23 & RWY 35 BEYOND 3NM.

Changes: LNAV/VNAV, DIST/ALT SCALE, THR ELEV.

CBAGN01-165