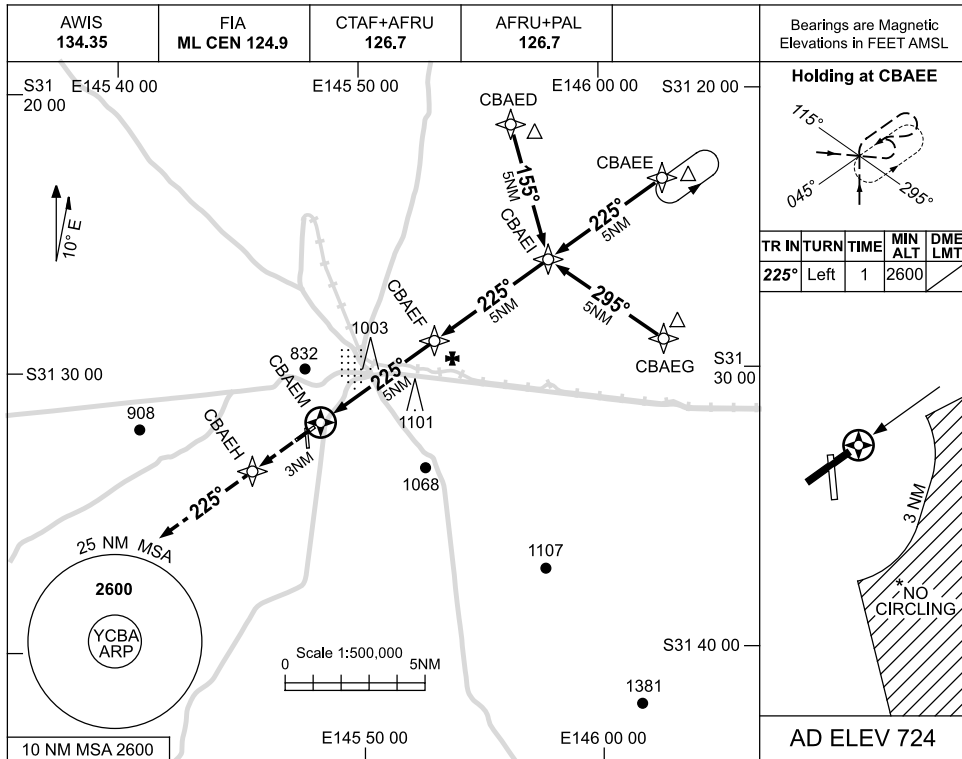


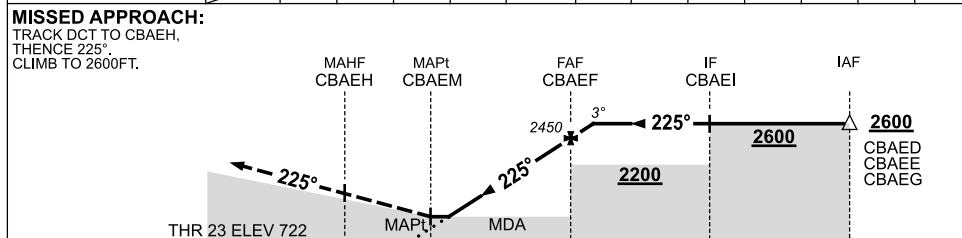
USE QNH

RNAV-Z (GNSS) RWY 23
COBAR, NSW (YCBA)

18 AUG 2016



NM TO NEXT WPT	CBAEM	1.5	2	3	4	CBAEF	0.5				
ALT (3° APCH PATH)		1340	1500	1820	2130	2450	2600				



NM FM MAPt 3 0.3 5 10 15

NOTES

CATEGORY	A	B	C	D
S-I GNSS	1340 (616-3.5)			NOT APPLICABLE
CIRCLING *	1390 (666-2.4)		1550 (826-4.0)	
ALTERNATE	(1166-4.4)		(1326-6.0)	

1. MAX IAS;
INITIAL : 210KT.
- * 2. NO CIRCLING
SOUTH-EAST OF
RWY 23 & RWY 35
BEYOND 3NM.

Changes: MSA REF POINT.

CBAGN01-148