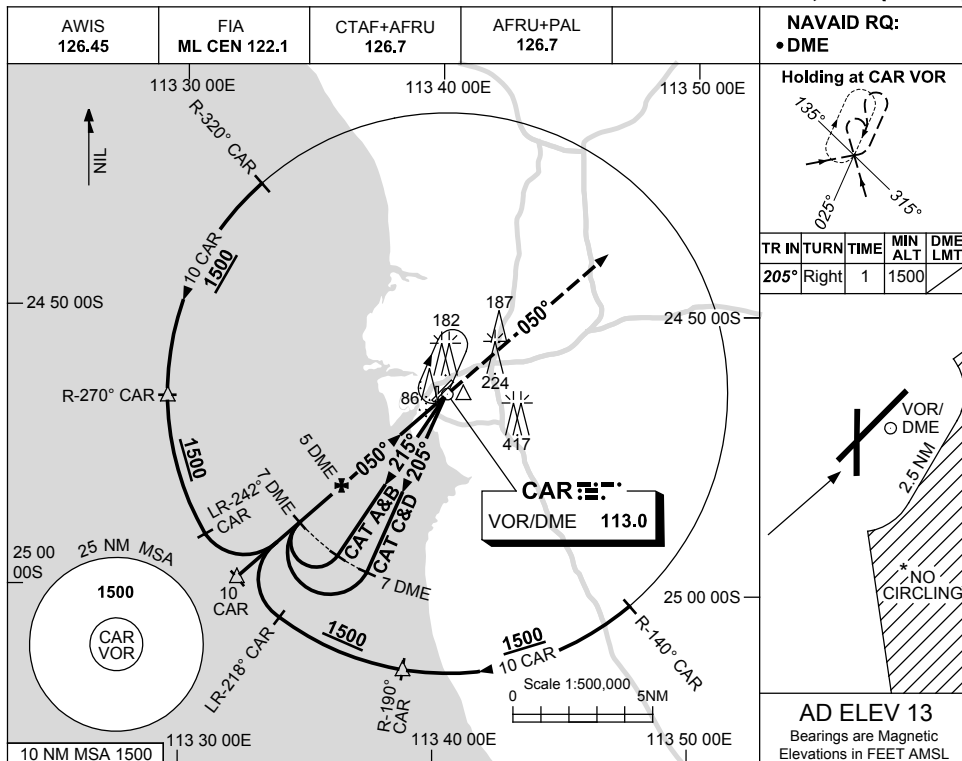


USE QNH

VOR-Z RWY 04  
CARNARVON, WA (YCAR)

23 MAR 2023



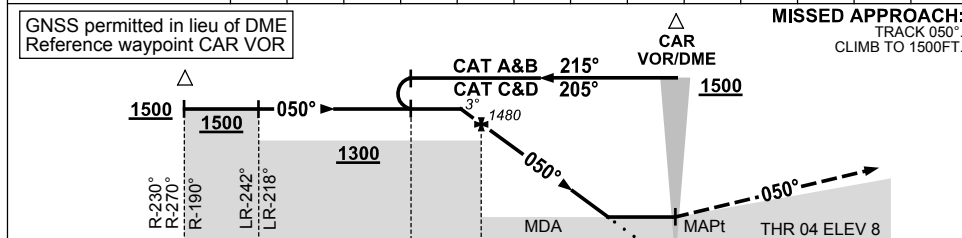
**NAVAID RQ:**  
• DME

**Holding at CAR VOR**

TR	IN	TURN	TIME	MIN ALT	DME LMT
205°	Right		1	1500	

**AD ELEV 13**  
Bearings are Magnetic  
Elevations in FEET AMSL

DIST TO CAR DME	5.1	5	4	3	2.1														
ALT (3° APCH PATH)	1500	1480	1160	850	550														



**NOTES**

- MAX IAS: INITIAL : 210KT.
- NO CIRCLING IN SECTOR EAST OF RWY 22 & RWY 36 BEYOND 2.5NM.

CATEGORY	A	B	C	D
S-I VOR/DME	550 (537-3.0)			
CIRCLING *	650 (637-2.4)	750 (737-4.0)	810 (797-5.0)	
ALTERNATE	(1137-4.4)	(1237-6.0)	(1297-7.0)	

Changes: THR ELEV. CARVO03-174