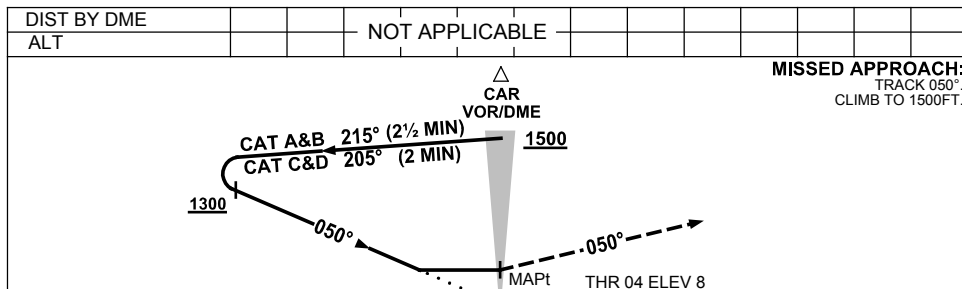
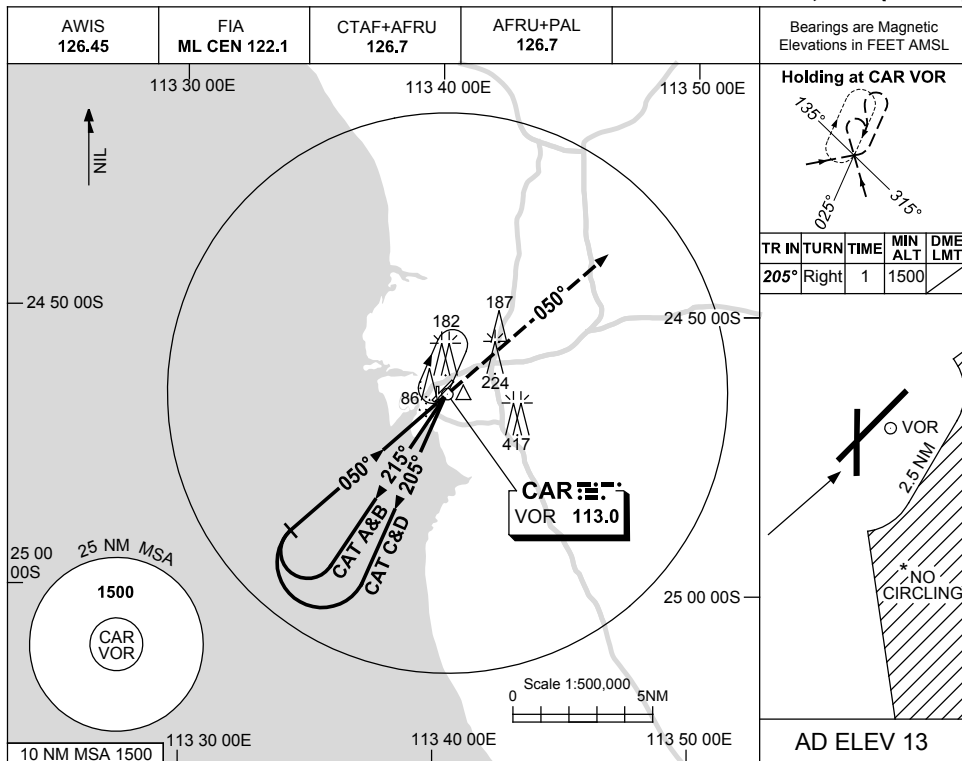


USE QNH

VOR-Y RWY 04  
**CARNARVON, WA (YCAR)**

23 MAR 2023



NM TO CAR DME

CATEGORY	A	B	C	D
S-I VOR	<b>600 (587-3.3)</b>			
CIRCLING *	<b>650 (637-2.4)</b>	<b>750 (737-4.0)</b>	<b>810 (797-5.0)</b>	
ALTERNATE	(1137-4.4)	(1237-6.0)	(1297-7.0)	

- NOTES**
- MAX IAS:  
INITIAL : 210KT.
  - NO CIRCLING IN SECTOR EAST OF RWY 22 & RWY 36 BEYOND 2.5NM.

Changes: THR ELEV.

CARVO01-174