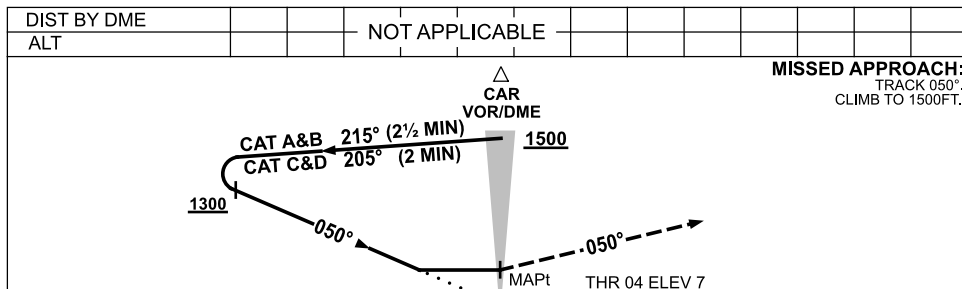
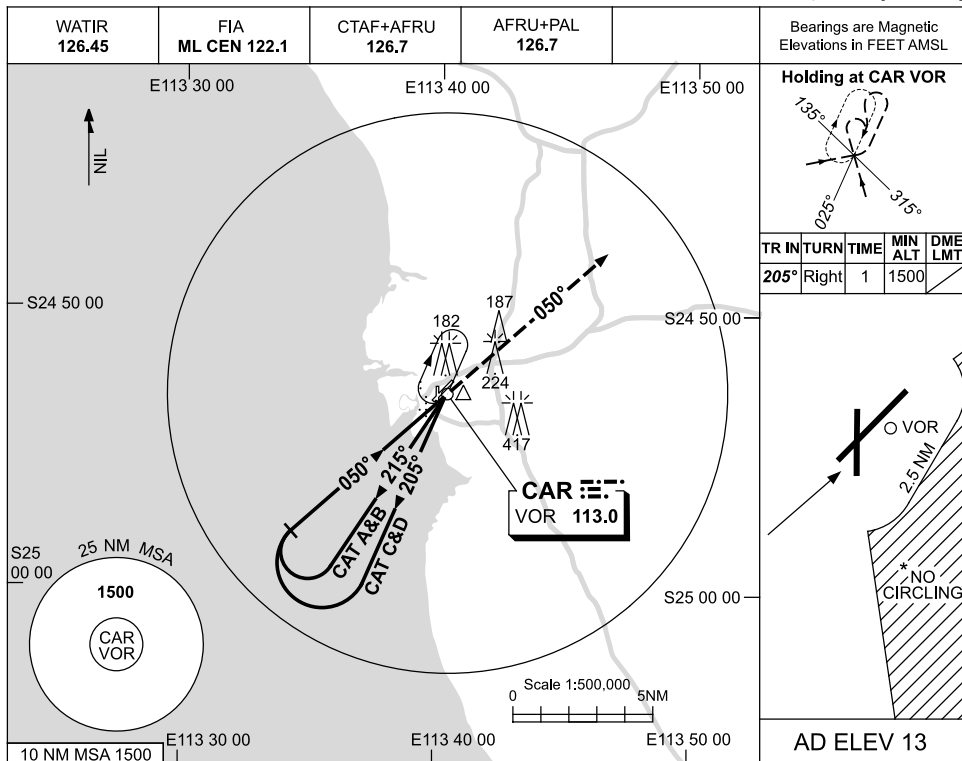


USE QNH

VOR-Y RWY 04
CARNARVON, WA (YCAR)

3 MAR 2016



NM BY DME

CATEGORY	A	B	C	D
S-I VOR	600 (587-3.3)			
CIRCLING *	650 (637-2.4)	750 (737-4.0)	810 (797-5.0)	
ALTERNATE	(1137-4.4)	(1237-6.0)	(1297-7.0)	

- NOTES**
1. MAX IAS: INITIAL : 210KT.
 - * 2. NO CIRCLING IN SECTOR EAST OF RWY 22 & RWY 36 BEYOND 2.5NM.

Changes: 182FT OBST LIT, Editorial.

CARVO01-146