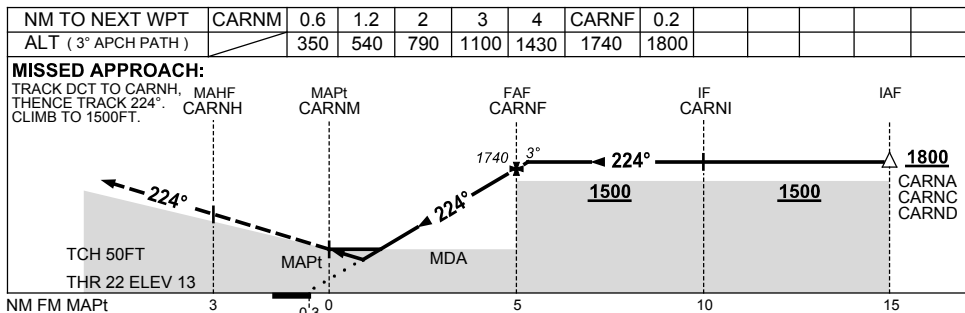
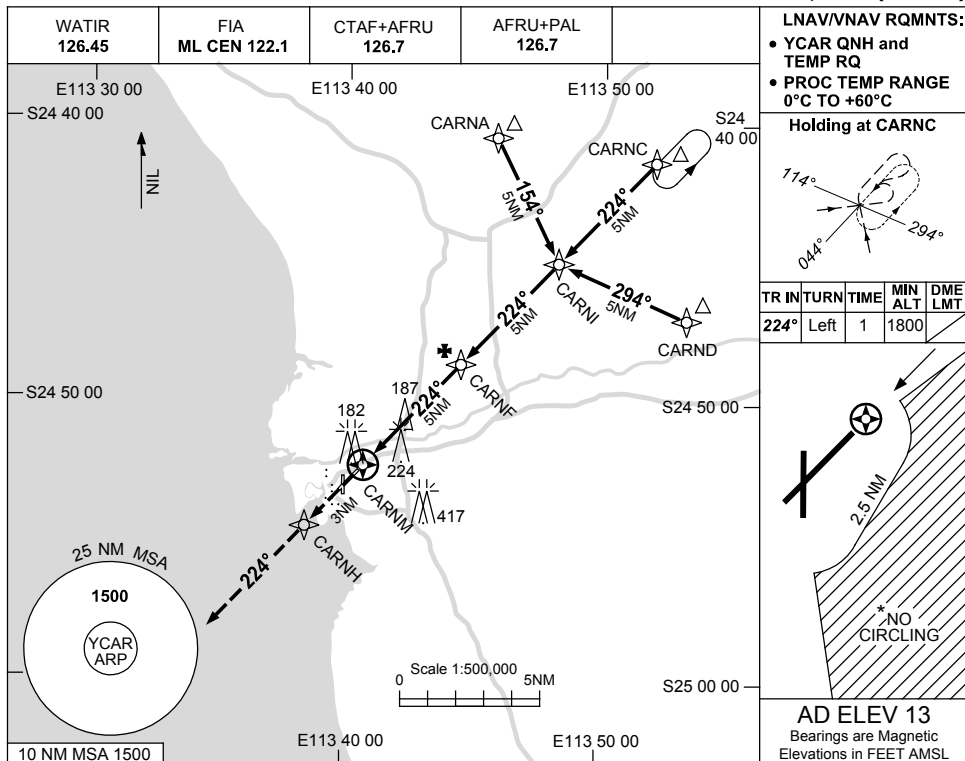


USE QNH

RNAV-Z (GNSS) RWY 22
CARNARVON, WA (YCAR)

1 MAR 2018



NOTES

CATEGORY	A	B	C	D
LNAV/VNAV		350 (337-1.9)		
LNAV		540 (527-3.0)		
CIRCLING *	650 (637-2.4)		750 (737-4.0)	810 (797-5.0)
ALTERNATE	(1137-4.4)		(1237-6.0)	(1297-7.0)

1. MAX IAS:
INITIAL : 210KT.
- * 2. NO CIRCLING IN SECTOR EAST OF RWY 22 & RWY 36 BEYOND 2.5NM.

Changes: LNAV/VNAV MINIMA, Editorial.

CARGN02-154