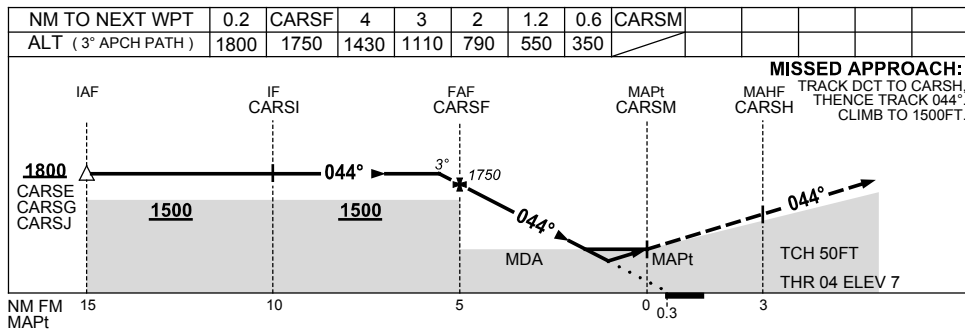
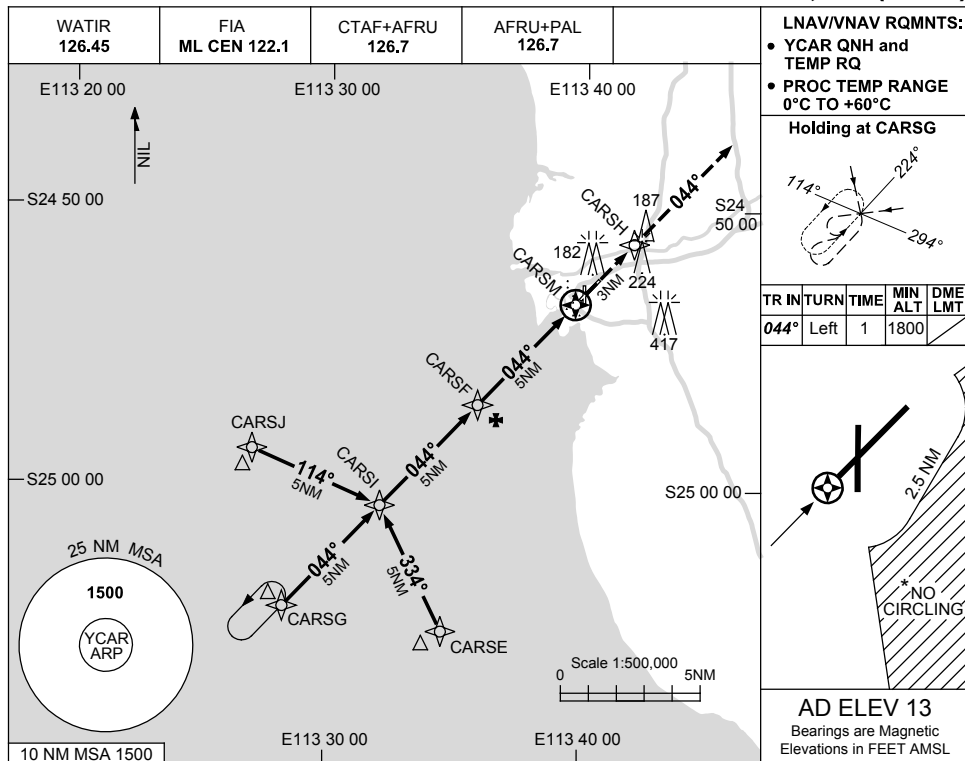


USE QNH

RNAV-Z (GNSS) RWY 04
CARNARVON, WA (YCAR)

1 MAR 2018



NOTES

1. MAX IAS: INITIAL : 210KT.
- * 2. NO CIRCLING IN SECTOR EAST OF RWY 22 & RWY 36 BEYOND 2.5NM.

CATEGORY	A	B	C	D
LNAV/VNAV	350 (343-1.9)			
LNAV	550 (537-3.0)			
CIRCLING *	650 (637-2.4)	750 (737-4.0)	810 (797-5.0)	
ALTERNATE	(1137-4.4)		(1237-6.0) (1297-7.0)	

Changes: LNAV/VNAV MINIMA, Editorial.

CARGN01-154