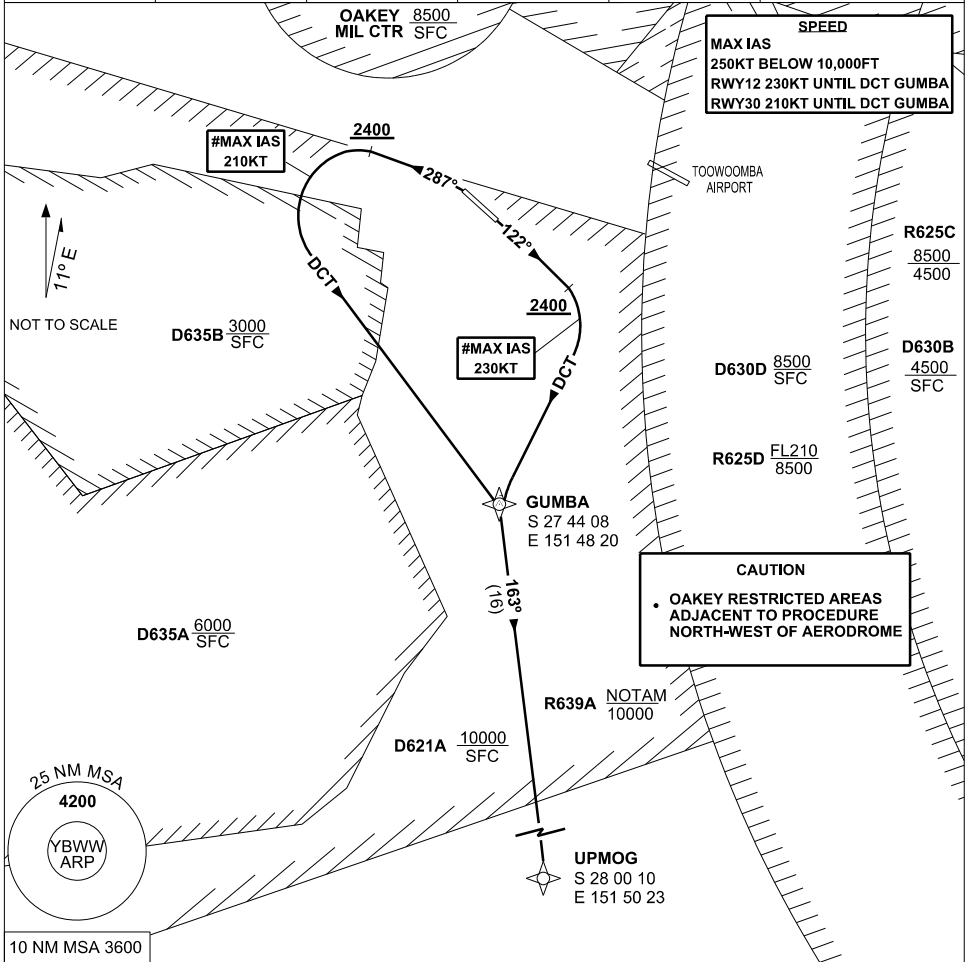


# STANDARD INSTRUMENT DEPARTURE (SID) RWYS SOUTH (RNAV) BRISBANE WEST WELLCAMP, QLD (YBWW)

5 NOV 2020

AWIS 133.6	FIA BN CEN 121.2	CTAF+AFRU 127.65	PAL 120.65	Bearings are Magnetic Elevations in FEET AMSL
---------------	---------------------	---------------------	---------------	--



## UPMOG ONE DEPARTURE

### RWY 12

- # **MAX IAS** 230KT UNTIL tracking DCT GUMBA  
GRAD 5% to 2400FT, thence 3.3%
- Track 122°
- **AT** 2400FT turn **RIGHT** track DCT to GUMBA
- Track 163° to UPMOG
- Intercept flight planned route

### RWY 30

- # **MAX IAS** 210KT UNTIL tracking DCT GUMBA  
GRAD 6% to 2400FT, thence 3.3%
- **NOT BEFORE DER** turn **LEFT** Track 287°
- **AT** 2400FT turn **LEFT** track DCT to GUMBA
- Track 163° to UPMOG
- Intercept flight planned route