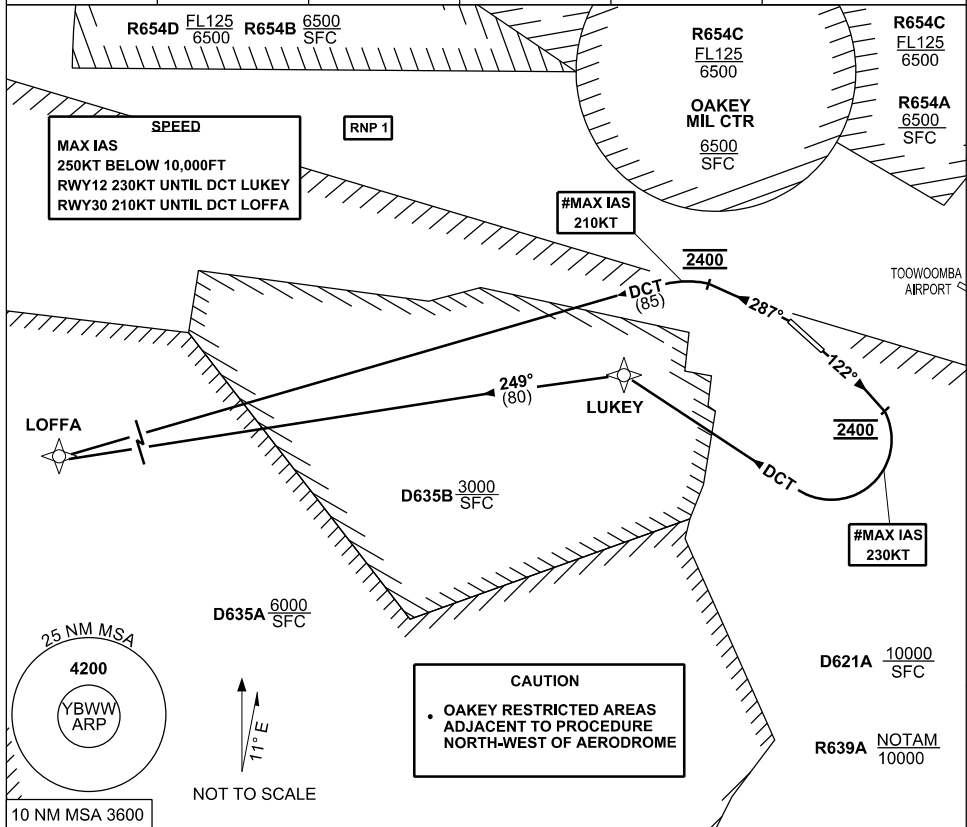


# STANDARD INSTRUMENT DEPARTURE (SID) RWYS WEST (RNAV) BRISBANE WEST WELLCAMP, QLD (YBWW)

16 JUN 2022

AWIS 133.6	FIA BN CEN 121.2	CTAF+AFRU 127.65	PAL+AA 120.65	Bearings are Magnetic Elevations in FEET AMSL
---------------	---------------------	---------------------	------------------	--



## LOFFA ONE DEPARTURE

### RWY 12

- # MAX IAS 230KT UNTIL tracking DCT LUKEY
- GRAD 5% to 2400FT, thence 3.3%
- Track 122°
- AT 2400FT turn **RIGHT** track DCT to LUKEY
- Turn **LEFT** Track 249° to LOFFA
- Intercept flight planned route

### RWY 30

- # MAX IAS 210KT UNTIL tracking DCT LOFFA
- GRAD 6% to 2400FT, thence 3.3%
- **NOT BEFORE DER** turn **LEFT** Track 287°
- AT 2400FT turn **LEFT** track DCT to LOFFA
- Intercept flight planned route

Changes: R654ABCD, OK MIL CTR

BWWDP03-171