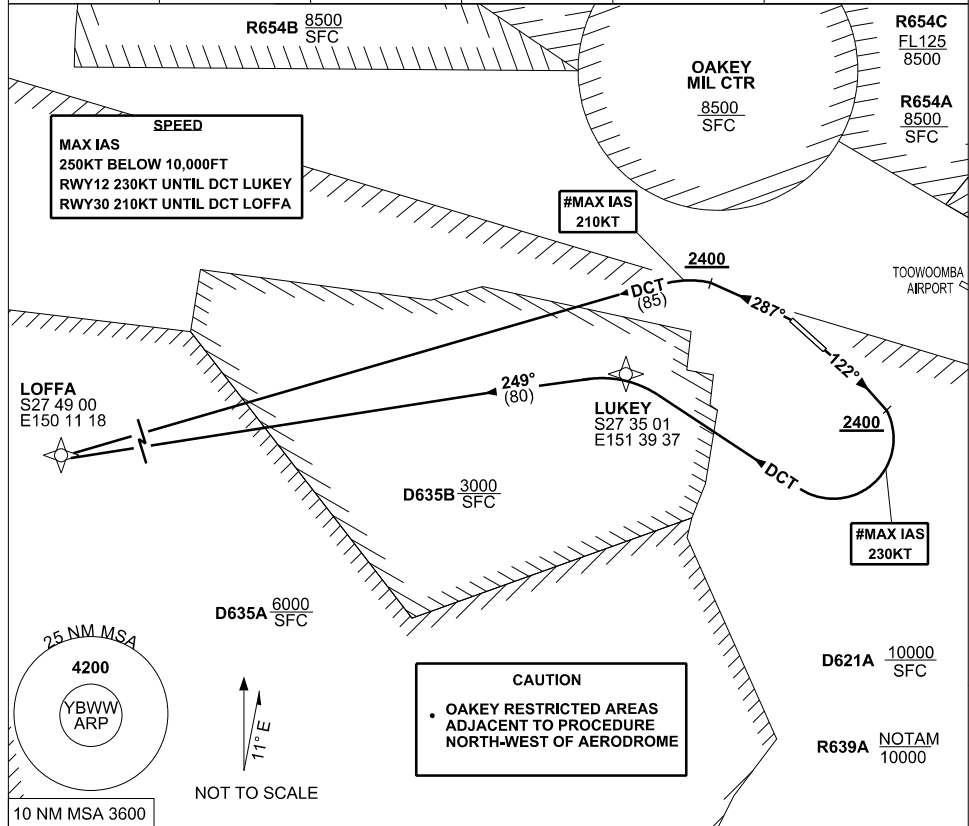


STANDARD INSTRUMENT DEPARTURE (SID) RWYS WEST (RNAV) BRISBANE WEST WELLCAMP, QLD (YBWW)

5 NOV 2020

AWIS 133.6	FIA BN CEN 121.2	CTAF+AFRU 127.65	PAL 120.65	Bearings are Magnetic Elevations in FEET AMSL
---------------	---------------------	---------------------	---------------	--



LOFFA ONE DEPARTURE

RWY 12

- **# MAX IAS 230KT UNTIL** tracking DCT LUKEY
- GRAD 5% to 2400FT, thence 3.3%
- Track 122°
- **AT 2400FT turn RIGHT** track DCT to LUKEY
- Turn **LEFT** Track 249° to LOFFA
- Intercept flight planned route

RWY 30

- **# MAX IAS 210KT UNTIL** tracking DCT LOFFA
- GRAD 6% to 2400FT, thence 3.3%
- **NOT BEFORE DER** turn **LEFT** Track 287°
- **AT 2400FT turn LEFT** track DCT to LOFFA
- Intercept flight planned route

Changes: EDITORIAL

BWWDP03-165