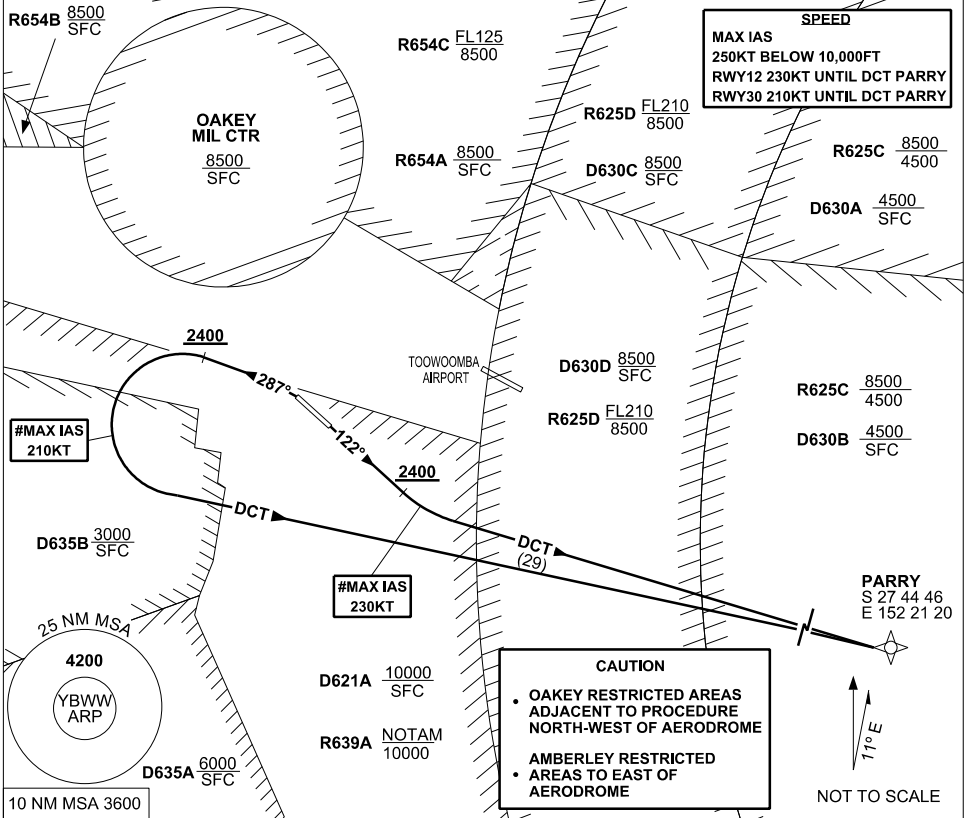


# STANDARD INSTRUMENT DEPARTURE (SID) RWYS EAST (JET) (RNAV) BRISBANE WEST WELLCAMP, QLD (YBWW)

5 NOV 2020

AWIS 133.6	FIA BN CEN 121.2	CTAF+AFRU 127.65	PAL 120.65	
				Bearings are Magnetic Elevations in FEET AMSL



## PARRY ONE DEPARTURE

### RWY 12

- # MAX IAS 230KT UNTIL tracking DCT PARRY
- GRAD 5% to 2400FT, thence 3.3%
- Track 122°
- AT 2400FT turn **LEFT** track DCT to PARRY
- Intercept flight planned route

### RWY 30

- # MAX IAS 210KT UNTIL tracking DCT PARRY
- GRAD 6% to 2400FT, thence 3.3%
- **NOT BEFORE DER** turn **LEFT** track 287°
- AT 2400FT turn **LEFT** track DCT to PARRY
- Intercept flight planned route