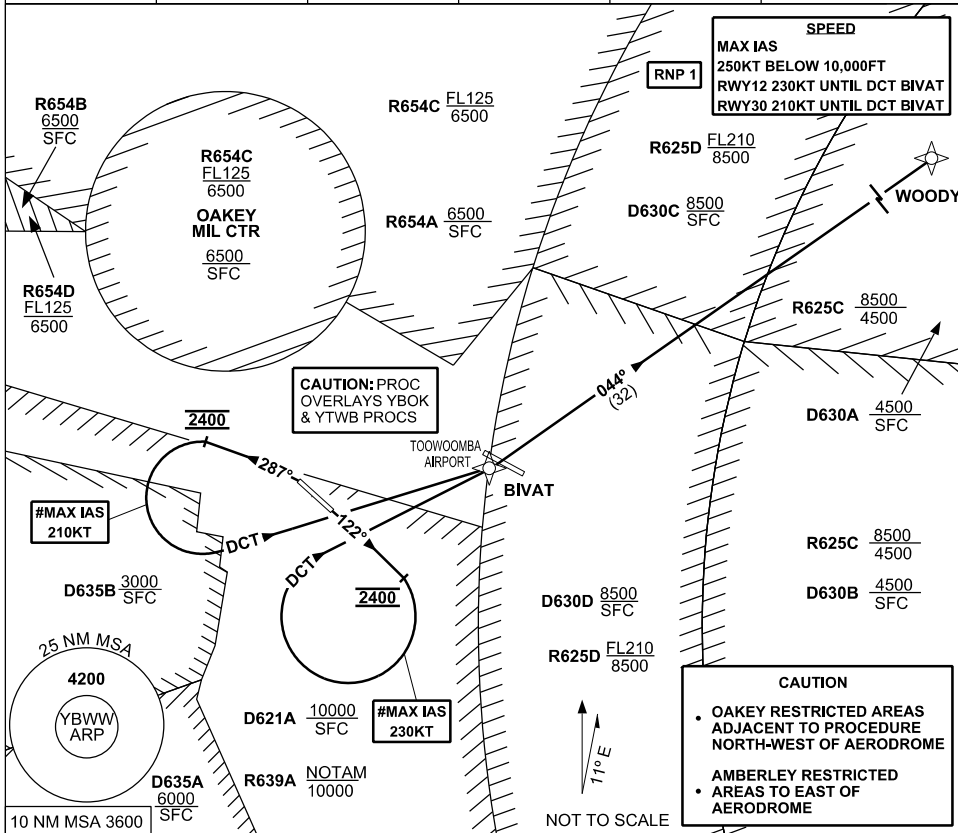


**STANDARD INSTRUMENT DEPARTURE (SID)  
RWYS EAST (RNAV)  
BRISBANE WEST WELLCAMP, QLD (YBWW)**

**16 JUN 2022**

AWIS 133.6	FIA BN CEN 121.2	CTAF+AFRU 127.65	PAL+AA 120.65		Bearings are Magnetic Elevations in FEET AMSL
---------------	---------------------	---------------------	------------------	--	--



**WOODY ONE DEPARTURE**

**RWY 12**

# MAX IAS 230KT UNTIL tracking DCT BIVAT  
GRAD 5% to 2400FT, thence 3.3%

- Track 122°
- AT 2400FT turn **RIGHT** track DCT to BIVAT
- Track 044° to WOODY
- Intercept flight planned route

**RWY 30**

# MAX IAS 210KT UNTIL tracking DCT BIVAT  
GRAD 6% to 2400FT, thence 3.3%

- **NOT BEFORE DER** turn **LEFT** track 287°
- AT 2400FT turn **LEFT** track DCT to BIVAT
- Track 044° to WOODY
- Intercept flight planned route

Changes: R654ABCD, OK MIL CTR

BWWDP01-171