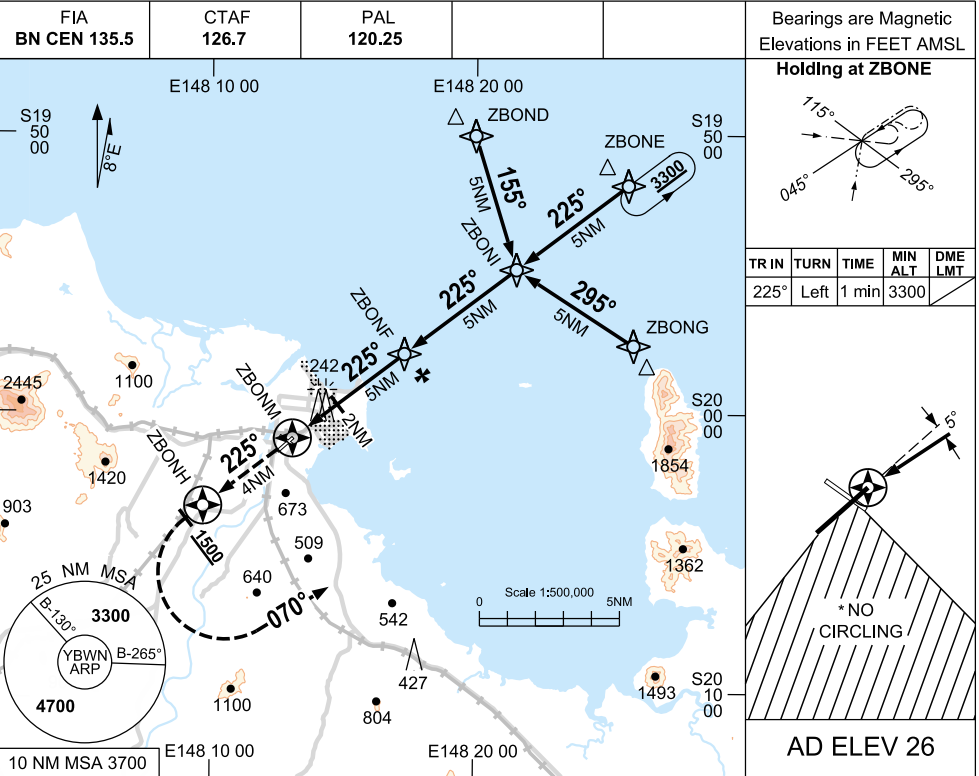
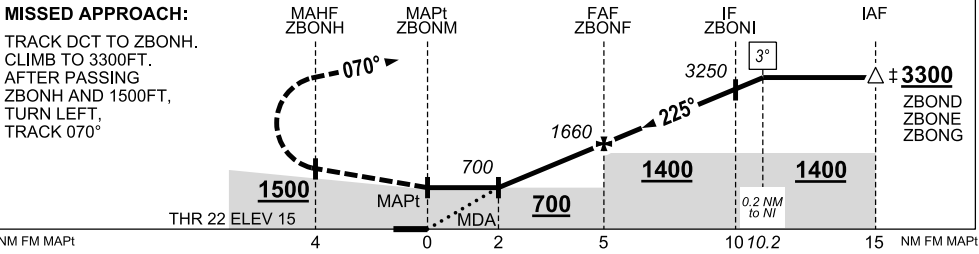


3 MAR 2016



NM TO NEXT WPT	ZBONM	1.9	2	3	4	ZBONF	1	2	3	4	ZBONI	0.2	
ALT (3.0° APCH PATH)		660	700	1020	1340	1660	1980	2290	2610	2930	3250	3300	



Gnd Speed (KTS)	60	70	80	90	100	120	140	160
Desc Rate (fpm) (3.0°)	320	370	420	480	530	640	740	850

CATEGORY	A	B	C	D
S-I GNSS ‡	660 (645-3.6)			NOT APPLICABLE
CIRCLING ‡*	970 (944-2.4)		1070 (1044-4.0)	
ALTERNATE	(1444-4.4)		(1544-6.0)	

- NOTES**
- MAX IAS:
INITIAL 210 KTS
 - NO CIRCLING IN SECTOR SOUTH OF RWY 04/22 AND 12/30
 - TAF NAVBL. REFER AIP ENR 1.5 PARA 5.3.4.

Changes: New procedure

BWNGN02-146

