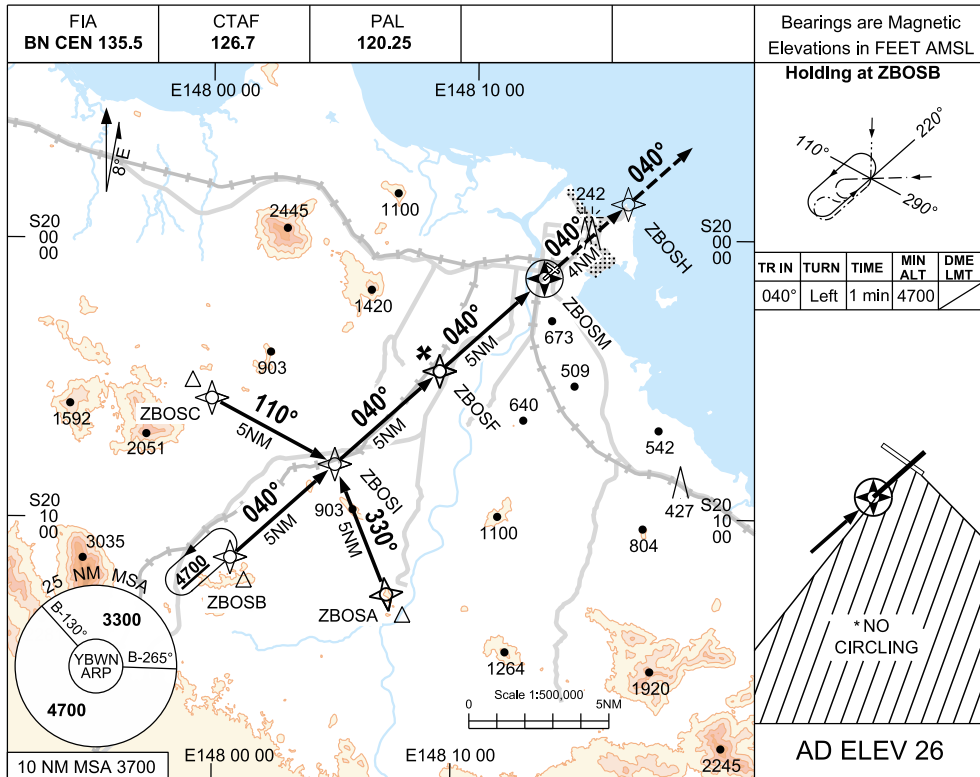


USE QNH

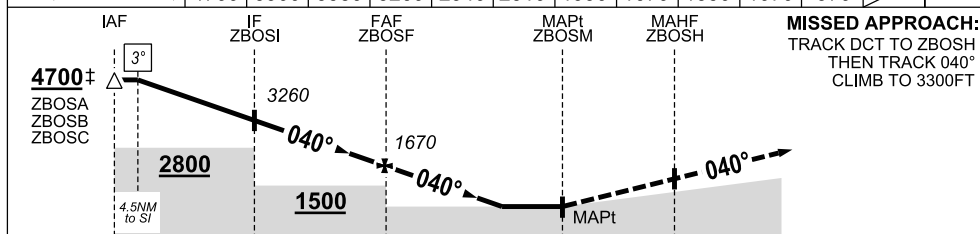
RNAV-S (GNSS)

BOWEN, QLD (YBWN)

3 MAR 2016



NM TO NEXT WPT	4.5	2	1	ZBOSI	4	2	1	ZBOSF	4	3.1	2.8	ZBOSM
ALT (3.0° APCH PATH)	4700	3900	3580	3260	2940	2310	1990	1670	1350	1070	970	



Gnd Speed (KTS)	60	70	80	90	100	120	140	160
Desc Rate (fpm) (3.0°)	320	370	420	480	530	640	740	850

CATEGORY	A	B	C	D
CIRCLING*‡	970 (944-2.4)		1070 (1044-4.0)	NOT APPLICABLE
ALTERNATE	(1444-4.4)		(1544-6.0)	

- ### NOTES
- MAX IAS:
INITIAL 210 KTS
 - NO CIRCLING IN SECTOR SOUTH OF RWY 04/22 AND 12/30
 - TAF NAVBL. REFER AIP ENR 1.5 PARA 5.3.4.

Changes: New procedure

BWNGN01-146

