

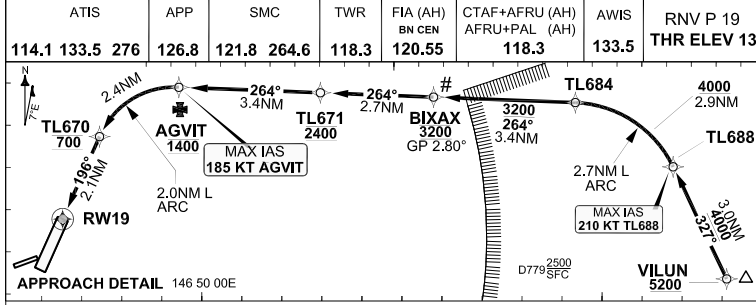
**FOR CASA APPROVED  
OPERATORS ONLY  
USE QNH**

RNAV-P (RNP) RWY 19

**9 SEP 2021**

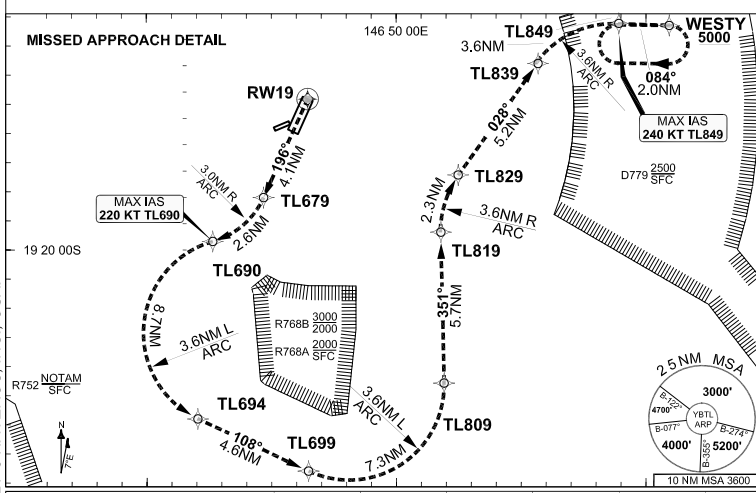
**TOWNSVILLE/TOWNSVILLE INTL, QLD (YBTL)**

GE PROPRIETARY INFORMATION



- RF RQ
- YBTL ACT QNH RQ
- YBTL ACT TEMP RQ
- APPROACH NA BELOW +7.0°C OR ABOVE +69°C

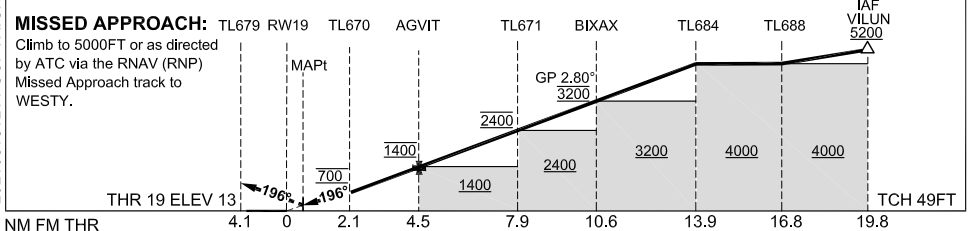
**Holding at WESTY**



| TR | INTURN | TIME  | MIN ALT | DME LMT |
|----|--------|-------|---------|---------|
|    | 084°   | Right | 1'      | 5000    |

**AD ELEV 18**  
Bearings are Magnetic  
Elevations in FEET AMSL

|                              |       |       |       |       |       |       |       |
|------------------------------|-------|-------|-------|-------|-------|-------|-------|
|                              | TL670 | AGVIT | TL671 | BIXAX | TL684 | TL688 | VILUN |
| <b>ALT (2.80° APCH PATH)</b> | 700   | 1400  | 2400  | 3200  | 4202  | 5070  | 5947  |



**NOTES**

1. APCH Path does not coincide with PAPI glide path 3.3°.
2. RNP 0.30 Required from IAF
- \*3. Minimum MAP gradient 3.75% to 4300 FT Required for Obstacle Clearance.
- #4. Latest Intercept Point (LIP)

| CATEGORY                   | A   | B | C                   | D                   |
|----------------------------|-----|---|---------------------|---------------------|
| RNP (0.30)*<br>(3.75% MAP) |     |   | DA(H) 435 (422-2.4) | DA(H) 435 (422-2.4) |
| CIRCLING                   | N/A |   | NOT AUTHORISED      | NOT AUTHORISED      |
| ALTERNATE                  |     |   |                     |                     |

Changes: From SUP H38/21.

BTLGN07-168

Prepared by GE Aviation - ICAO Doc 9905 Compliant

**DO NOT USE FOR NAVIGATION**

