

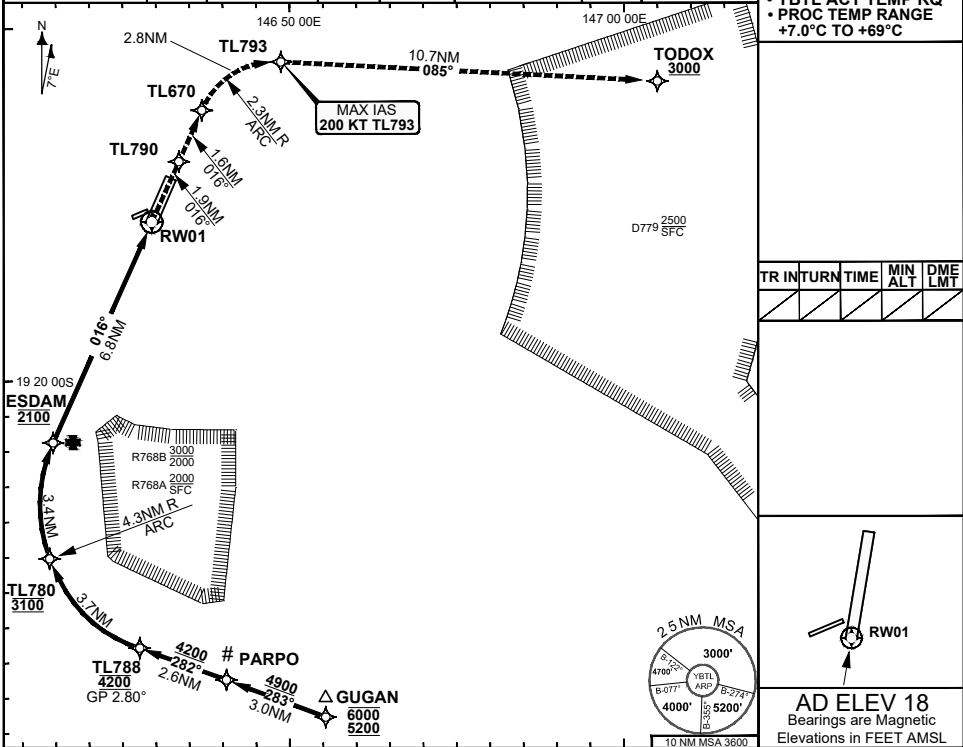
**FOR CASA APPROVED
OPERATORS ONLY
USE QNH**

RNP P RWY 01 (AR)

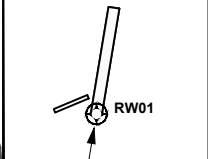
30 NOV 2023

TOWNSVILLE/TOWNSVILLE INTL, QLD (YBTL)

ATIS	APP	SMC	TWR	FIA (AH) BN CEN	CTAF+AFRU (AH) AFRU+PAL (AH)	AWIS	RNP P 01 THR ELEV 18	RNP AR APCH • RF RQ • YBTL ACT QNH RQ • YBTL ACT TEMP RQ • PROC TEMP RANGE +7.0°C TO +69°C
114.1 133.5 276	126.8	121.8 264.6	118.3	120.55	118.3	133.5		

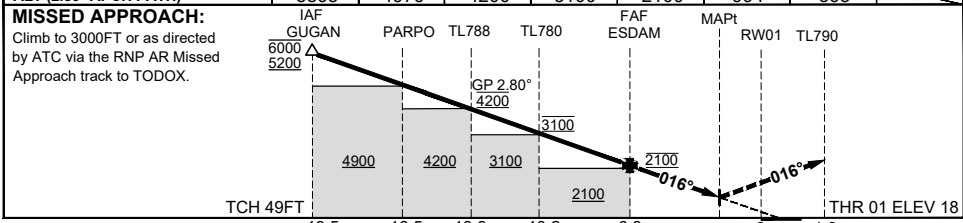


TR	INTURN	TIME	MIN ALT	DME LMT



AD ELEV 18
Bearings are Magnetic
Elevations in FEET AMSL

ALT (2.80° APCH PATH)	GUGAN	PARPO	TL788	TL780	ESDAM	3.1	1.0	RW01
	5868	4976	4200	3100	2100	994	368	



MISSED APPROACH:
Climb to 3000FT or as directed by ATC via the RNP AR Missed Approach track to TODOX.

NOTES

- Lateral transition to MAP must not be initiated prior to DA/H PSN.
- RNP 0.30 RQ FROM WPT GUGAN TO RWY01
- RNP 0.50 RQ FROM WPT RWY01 TO TL790
- RNP 0.10 Minimum MAP gradient 4.8% to 1600FT Required for Obstacle Clearance.
- Latest Intercept Point (LIP)
- APCH Path does not coincide with PAPI glide path 3.0°.

CATEGORY	A	B	C	D
RNP (0.30)			DA(H) 994 (976-5.0)	DA(H) 994 (976-5.0)
RNP (0.10)* (4.8% MAP)			DA(H) 368 (350-2.1) 1.7 HIALS	DA(H) 368 (350-2.1) 1.7 HIALS
CIRCLING	N/A		NOT AUTHORISED	NOT AUTHORISED
ALTERNATE				

202308030718 COPYRIGHT 2023 © NAVERUS, INC., USA., GE PROPRIETARY INFORMATION

Changes: EDITORIAL, KIRAN TO PARPO, WESTY TO TODOX. BTLGN06-177

Prepared by GE Aviation - ICAO Doc 9905 Compliant

